

CSR IMPACT ASSESSMENT REPORT

(Projects concluded in FY 2021-22)

TATA SONS PRIVATE LIMITED



SOULACE CONSULTING PVT LTD

INTRODUCTION

Tata Sons acknowledges the challenges faced by the underprivileged and marginalized communities in their pursuit of sustainable development. In response, the company has taken a proactive approach by harmonizing its CSR programs through a unified "One Tata" strategy, resulting in enhanced synergy and a significantly increased impact. The CSR projects are meticulously selected, adhering to strict criteria, and always address the real and critical needs of the under-served communities. Moreover, the company's commitment to coherence ensures that all these initiatives are closely aligned with national development goals, with a strong focus on vital areas such as healthcare, rural development, sustainable livelihoods, education, sports, and poverty reduction. This study aims to evaluate the impact of 34 completed projects covered in 29 reports, each lasting for at least one year. The focus is on projects that received more than Rs 1 Crore in CSR funding from Tata Sons and concluded in FY 2021-22. The cumulative funding for these projects from Tata Sons' CSR was Rs 337.75 Crore. It's worth noting that not all the projects mentioned in this report were started in FY 2021-22; some of them were launched in previous financial years. Specific details for each project can be found in the relevant section.



Number of Projects

34 (Compiled in 29 Reports)



Thematic Area Covered

Health, Education and Sports, Innovation, Rural upliftment, Urban Poverty Alleviation, WaSH



Implementing Partner

Tata Education and Development Trust (TEDT)



Number of Lives Touched

10 Million+

Schedule VII Alignment

- Projects are aligned with Schedule VII read with Section 135 of the Companies Act, 2013 under the following activities:
- i) Eradicating hunger, poverty, and malnutrition, promoting health care including preventive health care and sanitation, and making available safe drinking water.
 - ii) Promoting education, including special education and employment enhancing vocation skills, especially among children, women, elderly, and the differently abled and livelihood enhancement projects.
 - vii) Training to promote rural sports, nationally recognized sports, paralympic sports and Olympic sports
 - x) Rural Development Projects

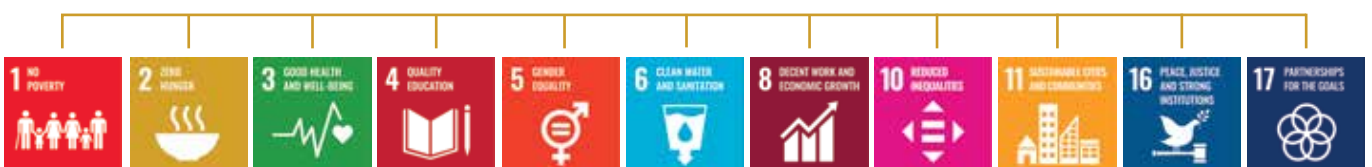
OECD Development Assistance Committee (DAC) Framework for Evaluation

The Organisation for Economic Co-operation and Development (OECD) is an international organisation that works to build better policies for better lives by establishing evidence-based global standards and finding solutions to a range of social, economic and environmental challenges. The impact of the CSR programs implemented by Tata Sons has been evaluated using the normative framework laid out by the OECD Development Assistance Committee (DAC) that has been endorsed by several nations and has received prominent recognition as an important reference for determining the merit, worth or significance of developmental programs.



Sustainable Development Goals (SDGs)

CSR programs funded by Tata Sons were assessed for alignment with the SDGs to determine their coherence. Out of the total 17 SDG goals, the programs are aligned with the following goals:-



EXECUTIVE SUMMARY

S.No.	Thematic Area	Amount spent in Rs. Cr.	Key Impact
1	Health Care (Cancer Care, Covid Care, Prevention of Acute Encephalitis Syndrome, Non-communicable Disease, TB & Malaria and Food Fortification and Double Fortified Salt)	260.46	Increased Access and Affordability of Cancer & NCDs Care for underserved communities. Reduction in morbidity and mortality rates. Creation of a Cadre of Healthcare Professionals, Hub-Based Cancer Diagnosis & Treatment. Clinical applications through telepathology platforms, E-learning platforms, data analytics as a service, teleradiology solutions, and IT applications for PBS. Augmented government's efforts to contain the spread of COVID, Instituted high-quality facilities for COVID care at a reduced cost. Long-term improvements in public healthcare delivery and community health outcomes. Upgraded, state-of-the-art healthcare infrastructure. Sustainable Diagnostic Solutions enabling rapid, accurate, and affordable diagnosis of critical diseases. Increased Adoption of Fortified Foods, Technical Assistance for Implementation, and Scaling Up of Food Fortification Efforts. Effective Advocacy for policy-level changes.
2	Water Sanitation & Hygiene (WaSH)	3.83	Enhanced Water Security by adopting a scientific approach to spring shed management. Significantly enhanced the health and hygiene of community members, reducing the burden of water-borne diseases. Empowered community members to take ownership of WaSH. Fostered collective action while contributing to environmental conservation through sustainable water use practices.
3	Education & Sports (Welfare program for ex-serviceman, Badminton & Football Academy)	7.55	Impacted the lives of dependents of Ex-Defense personnel by providing opportunities for higher education and career development. Nurtured talented young badminton players by providing high-quality training and educational opportunity. Established a Football academy to provide standardized football training to unemployed youth. Built capacity of youth to pursue careers in sports management. Contributed to the region's sports ecosystem and eventual economic growth.
4	Innovation (Data-driven Urban Governance & improving railway services connectivity)	44.44	Facilitated direct linkages between citizens and the government through a digital platform, Improved service delivery efficiency and effectiveness in urban areas. Enabled policymakers to identify gaps in delivery mechanisms using real-time data. Made internet services accessible to rural communities.
5	Rural Upliftment (Rural Transformation through women's collective, Aspirational fellowship, Rural entrepreneurship, Livelihood Improvement)	18.33	Facilitated multiple sources for agriculturists through sustainable livelihood initiatives. Equipped farmers with modern farming techniques and knowledge and adoption of high-value crops. Established self-reliant cooperatives & empowered women by prioritizing them in livestock and business management initiatives. Leveraged a community-centric design for water and livestock management resulting in social well-being and improved livelihoods.
6	Urban Poverty Alleviation (Grassroots Entrepreneurship, Overall health & well-being of adolescents & women)	3.14	Addressed critical development issues related to adolescents, such as secondary education completion, delayed age of marriage and first childbirth/pregnancy, and increased agency. Adopted a state-focused approach and collaboration with non-profit organizations, Collaborated with the Government of Odisha to promote livelihood options for skilled youth (Nano Unicorns) from recognized skill development institutes. Instituted a standardized training model relevant to the local context and easy finance support, Built the capacity of young candidates and promoted grassroots entrepreneurship and Created a long-lasting impact on the entrepreneurial ecosystem of Odisha.

INDEX

HEALTHCARE

Project No.	Project Description	Page No.
	Introduction	01
	Executive Summary	02
1	Ranchi Cancer Hospital and Research Centre	03
2	Yenepoya Cancer Care Program	04
3	Cachar Cancer Hospital and Research Centre	05
4	National Cancer Grid	06
5	Cancer Control Program	07
6	Tribal-Friendly Hospital in Gadchiroli	08
7	Tirupati Comprehensive Cancer Care Program	09
8	Prevention and Control of Acute Encephalitis Syndrome	10
9	Covid Care facilities in Buldhana and Sangli, Maharashtra	11
10	Setting up Covid Care facilities in Gujarat, Rajasthan, Uttar Pradesh, & Maharashtra	12
11	Pan India Non-Communicable Disease Screening Program	13
12	Supporting Innovations for TB and Malaria Elimination	14
13	Swasth Kutumbam Centers	15
14	Food Fortification Resource Centre (FFRC)	16
15	Supporting Statewide Distribution of Double Fortified Salt (DFS) through the Public Distribution System (PDS) in Jharkhand	17
	OECD Analysis	18-23

WATER SANITATION & HYGIENE (WaSH)

Project No.	Project Description	Page No.
16	WaSH - Water, Sanitation & Hygiene	24
17	Springshed Development Program under WaSH in Nagaland	25
	OECD Analysis	26-27

EDUCATION AND SPORTS

Project No.	Project Description	Page No.
18	Welfare Program for Ex-Servicemen and their Dependents in Uttar Pradesh	28
19	Badminton Initiative in Chhattisgarh	29
20	Grassroot Development of Indian Football	30
	OECD Analysis	31-32

INNOVATION

Project No.	Project Description	Page No.
21	National Urban Stack – Improve Data-Driven Urban Governance	33
22	Rail Sahyog (Enabling Access to Wi-Fi)	34
	OECD Analysis	35-36

RURAL UPLIFTMENT

Project No.	Project Description	Page No.
23	Rural Transformation in Endemically Poor Regions through Women Collectives	37
24	Aspirational District Fellowship Program	38
25	Sujalam Sufalam	39
26	Transformation Initiative through Centre for Microfinance	40
27	Central Himalayan Livestock Initiative (CHLI)	41
	OECD Analysis	42-43

URBAN POVERTY ALLEVIATION

Project No.	Project Description	Page No.
28	Dasra Adolescent Collaborative	44
29	Promote Grassroots Entrepreneurships	45
	OECD Analysis	46-47

Note: Similar projects compiled in one report, hence there are total 29 reports of 34 Projects.

Abbreviation	Definition	Page No.
PET-CT	Positron Emission Tomography – Computed Tomography	04
MRI	Magnetic Resonance Imaging	04
IEC	Information Education and Communication	16
FSO	Food Safety Officer	16
NDA	National Defense Academy	28
IMA	Indian Military Academy	28
OTA	Officers Training Academy	28
MHA	Ministry of Home Affairs	38

Healthcare

Project 01: Ranchi Cancer Hospital and Research Centre







BACKGROUND:

Across the nation, there has been a notable surge in the number of cancer cases, leading to a significant influx of patients seeking medical care. In response to this pressing issue, Tata Sons supported Tata Trusts/ TEDT to set-up Ranchi Cancer Hospital and Research Centre to establish the Ranchi Cancer Hospital and Research Centre (RCHRC) in Kanke, Ranchi. This initiative aimed to address the needs of the socioeconomically disadvantaged segments of society in Jharkhand by providing comprehensive cancer care services. The overarching goal of the program is to ensure that cancer treatment becomes accessible and affordable to all individuals, irrespective of their financial circumstances.

This facility will enable early cancer detection, diagnosis, surgery, chemotherapy, radiation therapy, and palliative care services for cancer patients. The program have the following key features:

- Provision of radiotherapy, medicinal and surgical oncology, and cancer diagnostics services.
- Awareness generation among communities about cancer prevention and early detection through education and outreach programs.
- Provision of emotional and psychological support to cancer patients and their families.

 <p>MAJOR STAKEHOLDERS</p> <p>Tata Trusts Government of Jharkhand</p>	 <p>PROJECT DURATION</p> <p>2019 - 2022</p>	 <p>TATA SONS CONTRIBUTION</p> <p>Rs. 11 Crore</p>	<p>1.5 Lakh sq.ft. area cancer care hospital</p> <p>87 bedded specialized cancer hospital</p> <p>27 cancer treatment beds and 60 Daycare beds</p>	<p>Provision of 2 Linac Bunkers and other facilities like 1 Brachytherapy, 1 PET-CT, 1 MRI & 1 CT-Simulator</p>
 <p>LOCATION Ranchi, Jharkhand</p>				

OUTCOME & IMPACT:

The broad outcome and impact of the Ranchi Cancer Hospital and Research Centre program are summarized below:

- Access potential to early diagnosis and treatment of cancer, increase in prevention and screening of patients for cancer, reduction in concerns of cost and time for necessary tests, travel to hospital, will contribute to savings in out-of-pocket expenses spent on health by the beneficiaries.
- Early diagnosis and timely treatment of various types of cancers, improved access to advanced treatment options by providing quality cancer care services at an affordable cost to a wider range of people, increased awareness among the community about cancer prevention, and improved quality of life.

Project 02: Yenepoya Cancer Care Program



BACKGROUND:

The availability and affordability of cancer treatment facilities, combined with delays in cancer detection and diagnosis, pose significant challenges to effective treatment. In recognition of this pressing issue, Tata Trusts/ TEDT have partnered with the government to establish specialized cancer treatment facilities. As part of this endeavor, the Zulekha Yenepoya Institute of Oncology has been constructed, serving as a comprehensive medical center for cancer patients in Karnataka and Kerala.

This state-of-the-art facility has been designed to facilitate early detection, accurate diagnosis, surgical interventions, chemotherapy, radiation therapy, and palliative care services for individuals affected by cancer. Its implementation is underpinned by several key features that ensure optimal patient care and support:

- Provision of radiotherapy, medicinal and surgical oncology, and cancer diagnostics services.
- Providing screening, early detection and disease management services to cancer patients.
- Two Radiotherapy bunkers and one Brachytherapy bunker offers more targeted and precise approach to cancer.



MAJOR STAKEHOLDERS

Tata Trusts
Yenepoya University



PROJECT DURATION

2019 - 2022



TATA SONS CONTRIBUTION

Rs. 39.12 Crore

37,000 sq.ft.

the Radiation and Nuclear Medicine cancer centre was established in the premises of yenepoya university

Provision of 2 Linac Bunkers and other facilities like 1 Brachytherapy, 1 PET-CT

The facility reduced the out-of-pocket expenditure of patients along with the provision of high-quality cancer care



LOCATION

Mangalore and the surrounding area, Karnataka

OUTCOME & IMPACT:

The broad outcome and impact of the Yenepoya Cancer Care Program are summarized below:

- Access to early diagnosis and treatment of cancer, increase in prevention and screening of patients for cancer, reduction in concerns of cost and time for necessary tests, and travel to hospital, thus contributed to savings in out-of-pocket expenses spent on health by the beneficiaries.
- Truebeam radiotherapy machine offers a more targeted and precise approach to cancer and minimize damage to health tissues, results in fewer complication and time saving. Nuclear medicine facility, Brachytherapy machine and necessary accessories serves the patients with swift and precise treatment.
- Better management of patient load and efficient delivery of services, creation of new job opportunities, and medical tourism thus project contributing to regional development.

Project 03: Cachar Cancer Hospital and Research Centre



BACKGROUND:

In a significant collaboration, Tata Trusts/ TEDT has joined forces with the Cachar Cancer Hospital and Research Centre (CCHRC) to establish a cutting-edge facility that offers comprehensive and advanced cancer treatment services to the residents of Assam, Tripura, Manipur, Meghalaya, and Mizoram. This state-of-the-art facility has been meticulously developed to address the growing need for specialized cancer care in the region. The program's key features include:

- Establishment of nuclear medicine and radiation facility including positron emission tomography (PET-CT) scanner, linear accelerator, and brachytherapy unit.
- Awareness generation among communities about cancer prevention and early detection through education and outreach programs
- Establishing the concept of personalized care to each patient through effective, quality cancer treatment service. Additionally, striving to serve as a model of affordable and accessible primary healthcare service delivery.

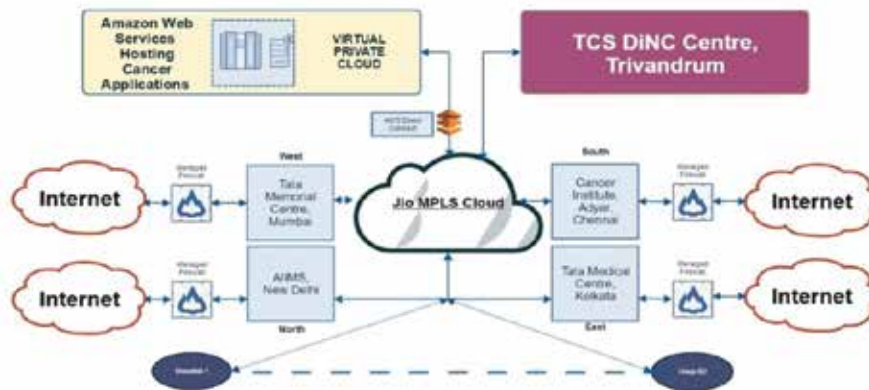
			For the diagnostic facility catchment area of 30-40 Lakh population	Reduced the traveling time to 1 to 2 hours for patients
MAJOR STAKEHOLDERS	PROJECT DURATION	TATA SONS CONTRIBUTION	Availability of a Dedicated Brachytherapy system	Availability of Magnetic Resonance Imaging (MRI) and Computed Tomography (CT) simulator
Tata Trusts Government of Assam	2019 - 2022	Rs. 22.13 Crore	4,000 to 5,000 new cancer cases treated per year	17,537 sq. ft. size of the facility with 90 beds
	LOCATION			
Silchar, Assam				

OUTCOME & IMPACT:

The broad outcome and impact of the Cachar cancer hospital and research centre for multiple stakeholders are summarized below:

- **Patients:** Reduction in turn-around time for necessary tests, travel to hospital, early diagnosis and timely treatment of cancer, improved access to advanced treatment options by providing quality cancer care services at an affordable cost, increased awareness among the community about cancer prevention, decrease in healthcare expenditure, and improved health outcomes.
- **Hospital:** Fostering capacity building of skilled healthcare professionals, contributing to the development of research, better management of patient load and efficient delivery of services, creation of new job opportunities thus project contributing to regional development. Nuclear medicine facility PET CT scanner, Brachytherapy system, provides one stop solution for cancer imaging with an all body evaluation. This is now providing swift and precise treatment at affordable cost to the people in the catchment area.

Project 04: National Cancer Grid



BACKGROUND:

National Cancer Grid (NCG) is an initiative of the Department of Atomic Energy, Government of India. Tata Sons funding enabled to provide high speed network and dedicated internet connectivity for NCG. It aims to evolve an implement uniform standard of cancer care across India, offer the state of art services for those afflicted by cancer, create human resources to tackle the rising need of cancer care, gauge the trend and type of national cancer problem through registry and conduct epidemiological studies for prevention of cancer, conduct direct cancer research in clinic and laboratory to invent cost effective solution for cancer in India.

NCG has the following components:

- Establishment of a network of centres for collaborative research in cancer.
- Facilitating the exchange of expert systems between these centres.
- Building knowledge storage hosted on the cloud and sharing it with hospitals and centres on the network.
- Creating a centralized repository of clinical guidelines and treatment protocols for cancer treatment.

			<p>150+ cancer centres connected with NCG across India</p>	<p>400 hospitals have been given access to O365 license from Microsoft</p>
<p>MAJOR STAKEHOLDERS</p>	<p>PROJECT DURATION</p>	<p>TATA SONS CONTRIBUTION</p>	<p>This has made cancer treatment accessible to people in a rural area</p>	<p>A centralized repository of clinical guidelines and treatment protocols for cancer treatment created</p>
<p>Tata Trusts & Government of India - Department of Atomic Energy</p>	<p>2020 - 2022</p>	<p>Rs. 40.68 Crore</p>	<p>Enhanced Quality of cancer treatment</p>	<p>Improvement in patient care and capacity-building clinical applications through telepathology platforms, E-learning platforms, data analytics as service, teleradiology solutions</p>
<p>LOCATION Pan India</p>				

OUTCOME & IMPACT:

The broad outcome and impact of the NCG are summarized below:

- Improved quality of online services by providing more internet-based services in the centre through cost-free O365 licenses from Microsoft.
- Improvement in patient care and capacity-building clinical applications through telepathology platforms, E-learning platforms, data analytics as a service, teleradiology solutions.
- Enhanced quality of cancer treatment through quick and early diagnosis and by the exchange of expertise across centres.
- Reduced disparities in the standards of patient care in various geographic regions of India making cancer treatment accessible to people living in rural areas as well.
- Increased collaboration between the government, providing centres across the country by promoting collaborative research in cancer care.

Project 05: Cancer Control Program



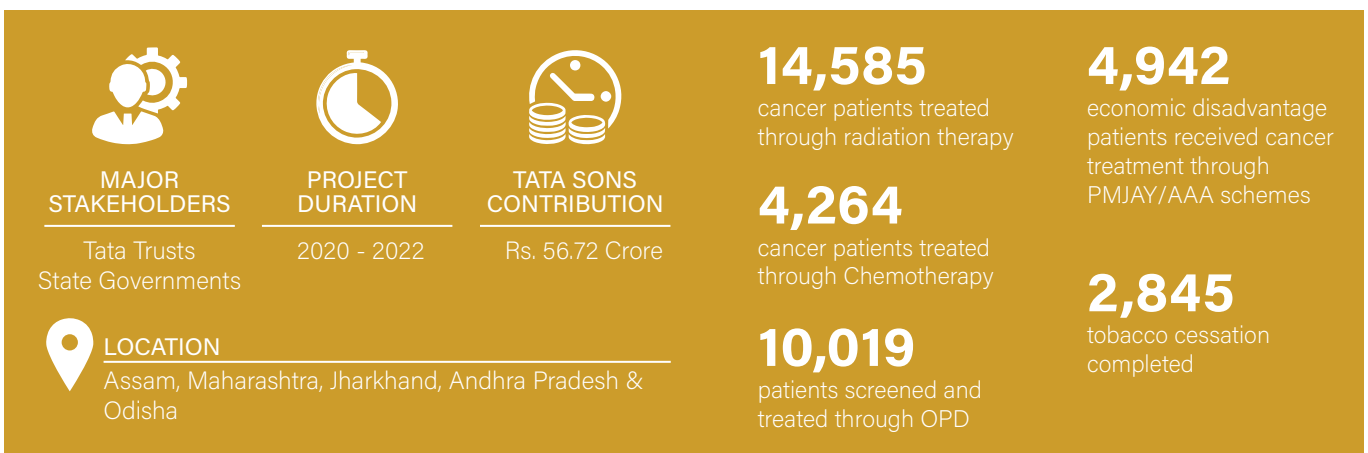
BACKGROUND:

Across the nation, there has been a significant surge in the number of patients seeking medical care due to the alarming rise in cancer incidence. The diverse range of patients, combined with the multifaceted nature of cancer care, poses substantial challenges in managing the patient burden effectively. In response to this pressing issue, Tata Trusts launched a pioneering cancer care initiative in 2017, spanning several states, including Assam, Maharashtra, Jharkhand, Andhra Pradesh, and Odisha.

The primary objective of this program was to provide comprehensive cancer care services to underprivileged sections of society, ensuring accessibility and affordability of treatment. By extending these services at affordable rates, the initiative aimed to alleviate the financial burden on patients residing within the catchment areas of the program.

This facility has enabled early cancer detection, diagnosis, surgery, chemotherapy, radiation therapy, and palliative care services for cancer patients. The program has the following key features:

- Provision of radiotherapy, medicinal and surgical oncology, and cancer diagnostics services.
- Awareness generation among communities about cancer prevention and early detection through education and outreach programs
- Facilitating and supporting patients in need and helping them to get the benefit of the government schemes.



OUTCOME & IMPACT:

The broad outcome and impact of the Cancer Control program are summarized below:

- Inclusive high-quality cancer care services to illiterate and underprivileged individuals, access to early diagnosis and treatment of cancer, increase in prevention and screening of patients for cancer, reduction in concerns of cost and time for necessary tests, travel to hospital, thus contributed to savings in out-of-pocket expenses spent on health by the beneficiaries.
- Early diagnosis and timely treatment of various types of cancers, improved access to advanced treatment options by providing quality cancer care services at an affordable cost to a wider range of people, increased awareness among the community about cancer prevention, and improved quality of life.

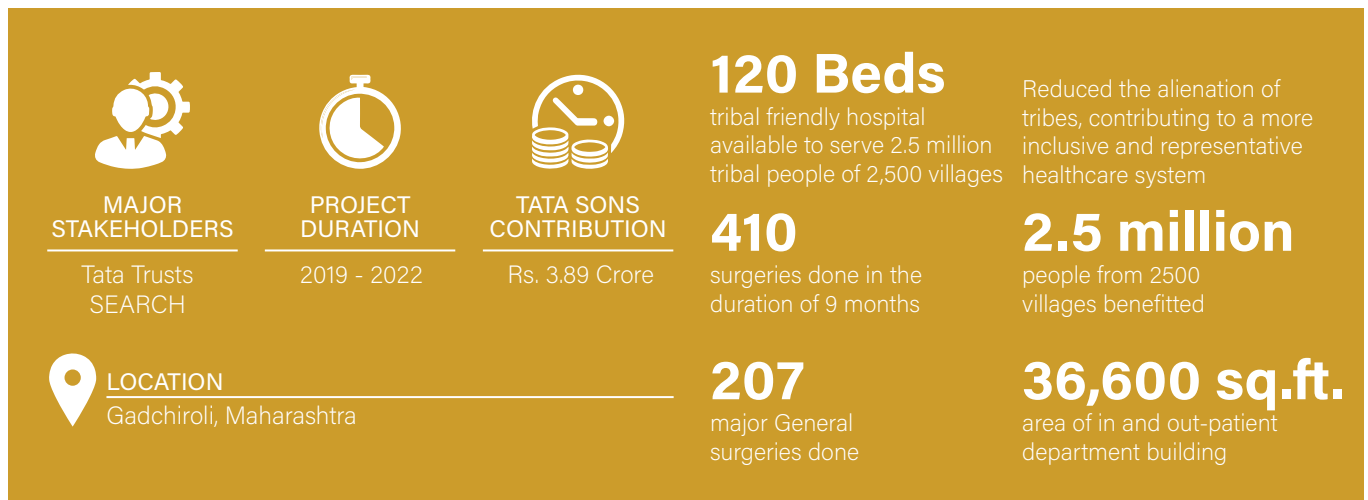
Project 06: Tribal-Friendly Hospital in Gadchiroli



BACKGROUND:

SEARCH (Society for Education Action Research in Community Health), a non-governmental organization dedicated to serving rural, tribal, and marginalized communities for over three decades, has faced challenges in meeting the increasing demand for their services. Insufficient infrastructure and limited resources have hindered their ability to cater to the population's needs effectively. To tackle this issue, TEDT (with CSR funding from Tata Sons) stepped in to provide support for the construction of a new 120-bed Tribal Friendly Hospital in Shodhggram, Gadchiroli.

The primary objective of this program was to offer comprehensive healthcare services to the tribal and rural population of the region. The hospital aimed to provide not only curative care but also preventive and promotive healthcare interventions. By adopting a holistic approach, the program sought to address the unique health needs of these communities and improve their overall well-being. The establishment of this hospital holds great significance as it serves as a vital healthcare resource for the tribal population in the district. Access to affordable healthcare services is a critical aspect of this initiative, ensuring that marginalized and tribal communities can avail themselves of essential medical care.



OUTCOME & IMPACT:

The broad outcome and impact of the Tribal friendly hospital program are summarized below:

- Early diagnosis and timely treatment of a wide range of diseases, free of cost, improved access to advanced treatment options by providing quality care services by specialists on a pro bono basis, reduced the alienation of tribes in Gadchiroli contributing to a more inclusive and representative healthcare system.
- Inclusive high-quality health care services to tribal and marginalized communities, reduction in concerns of cost and time for necessary tests, and travel to hospital, thus contributed to savings in out-of-pocket expenses spent on health by the beneficiaries

Project 07: Tirupati Comprehensive Cancer Care Program

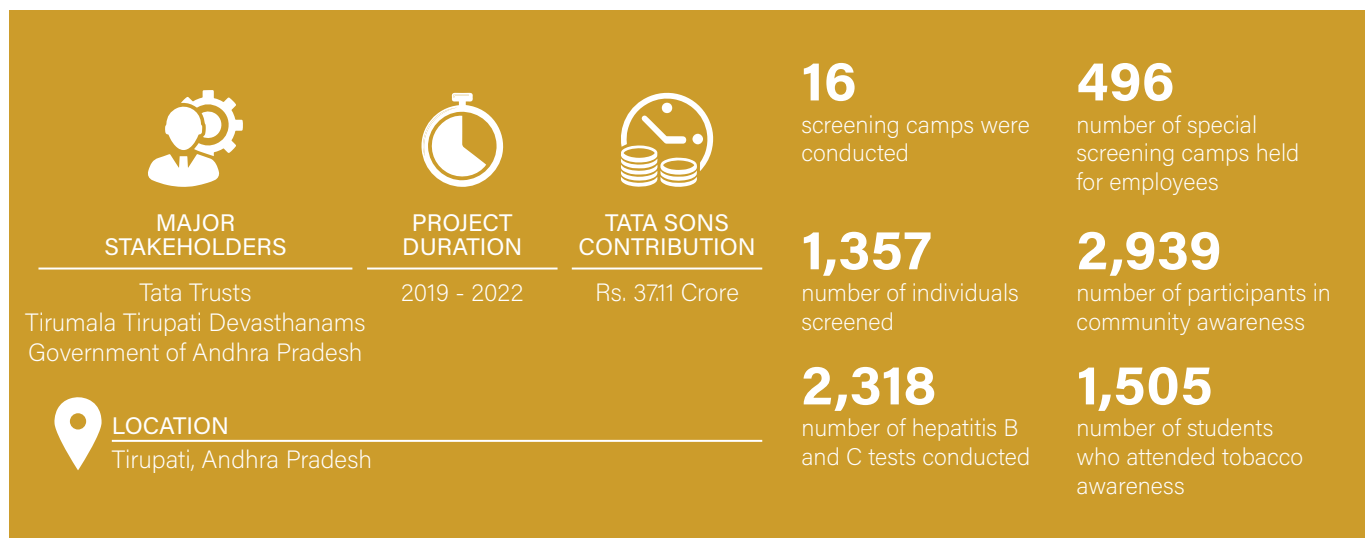


BACKGROUND:

Together Tata Sons and Tata Trusts endeavored to establish a healthcare network that offers top-notch, easily accessible, and cost-effective medical care, with a particular focus on cancer treatment, for millions of individuals across India in the comfort of their own homes. To prioritize this crucial objective, Tata Trusts/ TEDT forged a partnership with Tirumala Tirupati Devasthanam (TTD) and collaborated on the construction of the Sri Venkateswara Institute of Cancer Care and Advanced Research (SVICCAR) in Tirupati, Andhra Pradesh. This state-of-the-art facility was designed to facilitate early detection, accurate diagnosis, and effective treatment of cancer.

The program has the following key features:

- Provision of radiotherapy, medicinal and surgical oncology, and cancer diagnostics services.
- Prevention and early detection of cancer in the community by organizing screening events in nearby areas.



OUTCOME & IMPACT:

The broad outcome and impact of the Tirupati Comprehensive Cancer Care program are summarized below:

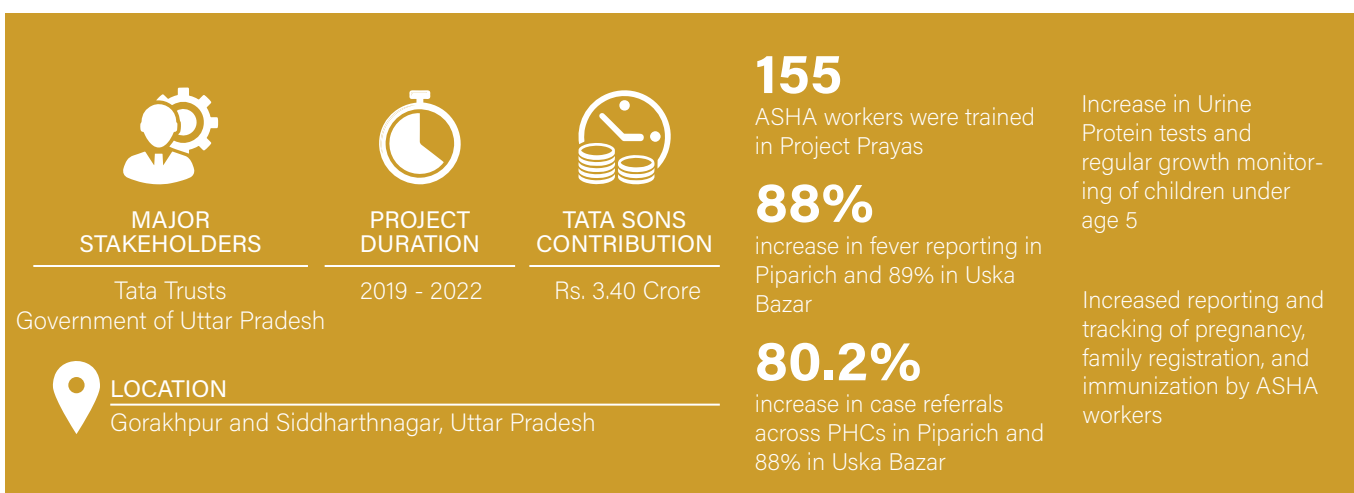
- Access to full-proof diagnosis and treatment of cancer, increase in prevention and screening of patients for cancer, reduction in concerns of cost and time for necessary tests, and travel to hospital, thus contributed to savings in out-of-pocket expenses spent on health by the beneficiaries.
- The program's emphasis on cancer prevention through screening events enables early detection and treatment of non-communicable diseases such as oral cancer, breast cancer, and cervical cancer, potentially reducing the number of cancer-related deaths in the region. The affordability of all services provided at the hospital will make cancer care accessible to a wider range of people, regardless of their financial status, thereby promoting equity in healthcare.

Project 08: Prevention and Control of Acute Encephalitis Syndrome



BACKGROUND:

The escalating cases of Acute Encephalitis Syndrome (AES) in Uttar Pradesh had drawn significant attention and called for urgent action. In response to this critical situation, Tata Trusts/ TEDT, in collaboration with the Government of Uttar Pradesh, initiated a community-based health promotion intervention specifically targeting regions prone to AES outbreaks within the state. The primary objective of this intervention was to establish and promote a community-based health promotion model in two selected model blocks, namely Gorakhpur and Siddharthnagar, which collectively encompass a population of over 300,000 individuals.



OUTCOME & IMPACT:

The broad outcome and impact of the Prevention and Control of Acute Encephalitis Syndrome program are summarized below:

- Increased fever tracking through the helpline center and active case identification contribute to a more inclusive and representative healthcare system.
- Improved immunization tracking and increased healthcare awareness resulted in improved health outcomes in the blocks.
- Improved healthcare services through increased monitoring and testing thus improving the quality of life of the population in the region.

Project 09: Covid Care facilities in Buldhana and Sangli, Maharashtra







BACKGROUND:

In response to the overwhelming increase in COVID-19 cases, healthcare institutions faced tremendous strain due to the extensive demands for testing, COVID care, and treatment facilities. To effectively combat this surge, Tata Trusts undertook the initiative to transform the sub-district hospitals in Sangli and Buldhana, Maharashtra, into permanent COVID-19 Treatment Centers. These centers were designed to provide comprehensive care to both in-patients and out-patients.

The program aimed to enhance the facilities by equipping them with critical care capabilities, minor operation theaters, essential pathology and radiology services, dialysis, and blood storage facilities, as well as telemedicine units specifically tailored for the treatment of COVID-19.

The following are the key components of the intervention:

- Upgradation of existing district hospitals into Covid-19 treatment centre equipped with advanced technology and facilities for the treatment of in-patients
- Ensuring that centre is completely furnished, and equipped with a consistent supply of oxygen, ventilators, bedside monitors, BiPAP machines, medical furniture, and any other essential critical equipment as required.

 MAJOR STAKEHOLDERS Tata Trusts Government of Maharashtra	 PROJECT DURATION 2020 - 2021	 TATA SONS CONTRIBUTION Rs. 15.66 Crore	50 bedded dedicated Covid care centre established at the sub-district hospital	5 ECG machines available in the hospital
 LOCATION Buldhana and Sangli, Maharashtra	8 Pulse oximeters available in the hospital	5 ICU patient monitors were installed in the facility	1,300 PPE goggles available for healthcare professionals and support staff	Availability of telemedicine facilities Availability of a hematology laboratory in the hospital

OUTCOME & IMPACT:

The broad outcome and impact of setting up Covid care facilities for multiple stakeholders are summarized below:

Patients:

- Quick and timely treatment of Covid patients with high-quality facilities, and reduction in out-of-pocket expenditure thus resulted in improved health outcomes.
- The timely intervention of COVID-19 complications with the availability of telemedicine facilities, timely diagnosis, and faster treatment with well-equipped radiology diagnostic centre. Thus, it ensured high-quality healthcare accessible to patients and improved the quality of life of the community even beyond the pandemic.

Hospital:

- Augmented the government's efforts to contain the spread of the infection.

Project 10: Setting up Covid Care facilities in Gujarat, Rajasthan, Uttar Pradesh, and Maharashtra

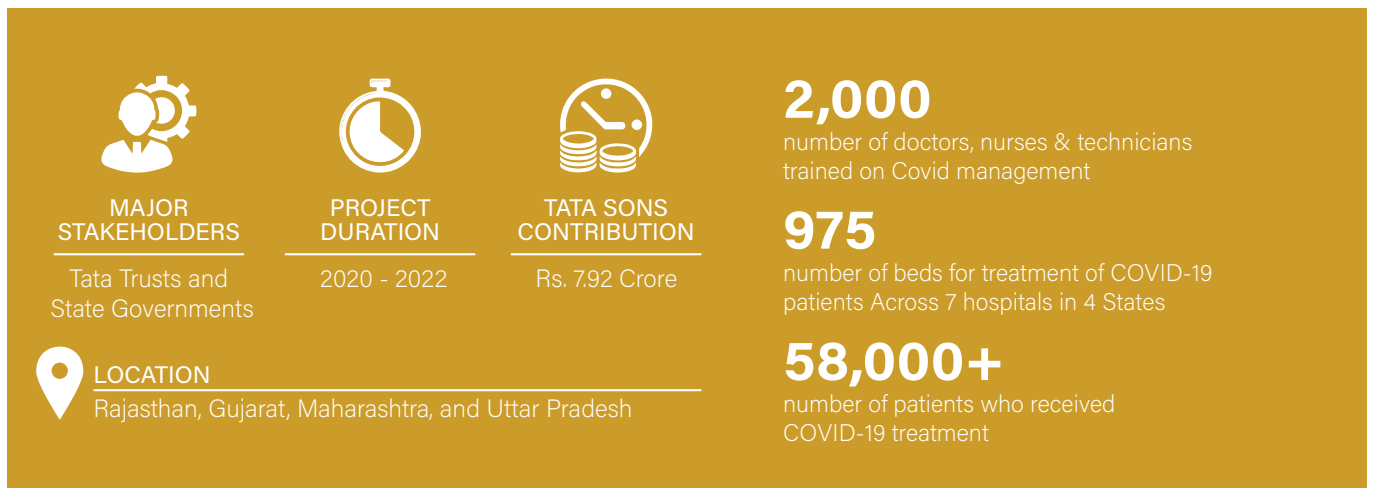


BACKGROUND:

Amidst the exponential surge in COVID-19 cases, healthcare institutions found themselves overwhelmed by the substantial burden of conducting an extensive number of tests and managing the care and treatment facilities for affected individuals. In response to this pressing need for rapid hospital capacity expansion, Tata Trusts/ TEDT (with funding from Tata Sons) collaborated with the Bill and Melinda Gates Foundation (BMGF) to establish COVID-19 infrastructure in four states: Rajasthan, Gujarat, Maharashtra, and Uttar Pradesh.

The program has the following key features:

- The enhancement of current regional medical facilities into specialized Covid-19 care establishments furnished with cutting-edge technology and amenities to cater to patients requiring hospitalization.
- Guaranteeing the comprehensive furnishing and equipping of the facility with a steady provision of oxygen, ventilators, medical furnishings, and other vital life-saving apparatus as necessary.



OUTCOME & IMPACT:

The broad outcome and impact of setting up Covid care facilities for multiple stakeholders are summarized below:

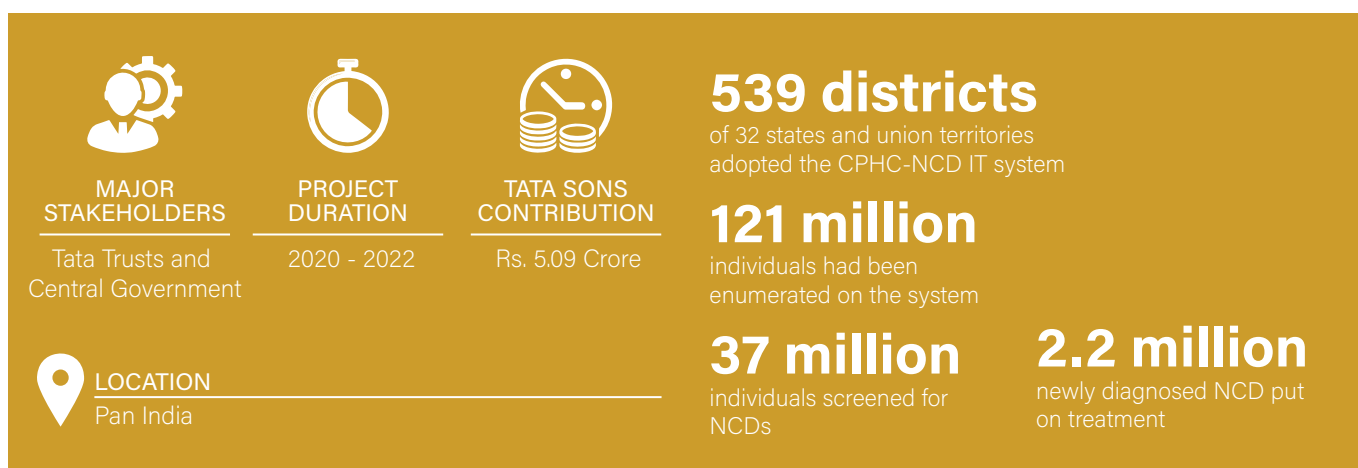
- **Patients:** Quick and timely treatment of Covid patients with high-quality facilities, reduction in out-of-pocket expenditure thus resulting in improved health outcomes.
- **Hospital:** Augmented government's efforts to contain the spread of the infection.

Project 11: Pan India Non-Communicable Disease Screening Program



BACKGROUND:

India has witnessed a significant increase in non-communicable diseases (NCDs). To tackle this challenge head-on, Ministry of Health & Family Welfare and the Government of India collaborated with Tata Trusts and Dell to develop and implement a comprehensive IT application for population-based screening (PBS). This innovative solution facilitates the creation of an electronic health record system, ensures standardized recording practices, assigns unique personal health IDs to individuals, streamlines referrals across all healthcare facilities, and enables effective tracking of follow-ups.



OUTCOME & IMPACT:

The broad outcome and impact of the Pan India non-communicable disease screening program are summarized below:

- Increased early detection and diagnosis of most prevalent NCDs, access to specialist consultations through telemedicine, and increased awareness about NCD screening further foster a culture of preventive healthcare.
- Decrease in patients out of pocket expenditure for health treatment, and access to high-quality services in remote areas at an affordable cost has resulted in a reduction of morbidity and mortality rates and improved overall quality of life of the community.





Project 12: Supporting Innovations for TB and Malaria Elimination



BACKGROUND:

In a collaborative effort, Tata Trusts, associated with the Global Fund to Fight AIDS, Tuberculosis, and Malaria, and the Government of India initiated the India Health Fund (IHF). This groundbreaking initiative aimed to diminish avoidable fatalities caused by infectious diseases by fostering the advancement of innovative technological and science-driven solutions. Its primary objective was to cultivate models, innovations, and strategies that could bring about substantial improvements in healthcare solutions.

The intervention focused on key elements such as prevention, diagnostics, screening, treatment, surveillance and data analytics. By identifying and facilitating innovations within the healthcare system, the IHF strived to drive transformative change and enhance the overall quality and effectiveness of healthcare delivery.

 <p>MAJOR STAKEHOLDERS</p> <p>Tata Trusts The Global Fund to Fight AIDS, Tuberculosis and Malaria</p>	 <p>PROJECT DURATION</p> <p>2020 - 2022</p>	 <p>TATA SONS CONTRIBUTION</p> <p>Rs. 8.45 Crore</p>	<p>800+</p> <p>potential innovations evaluated</p>	<p>5</p> <p>innovations Integrated into the Indian healthcare system</p>
 <p>LOCATION</p> <p>Pan India</p>			<p>13</p> <p>innovations in portfolio as on date</p>	<p>198</p> <p>number of innovations assessed from September to December 2021</p>

OUTCOME & IMPACT:

Innovative solutions backed by India Health Fund have multitudes of potential outcome/ impact that can be summarized as:

- Early Diagnosis of diseases contributing to improved health outcomes
- Reduced time and cost for diagnosis, resulting in early detection and treatment of diseases
- Improved management of Vector-borne Diseases and their associated health and economic impacts.
- Reduced burden of diseases through prevention, screening, diagnosis, treatment pathways, and surveillance, ultimately improving health outcomes in India and beyond.

Project 13: Swasth Kutumbam Centers

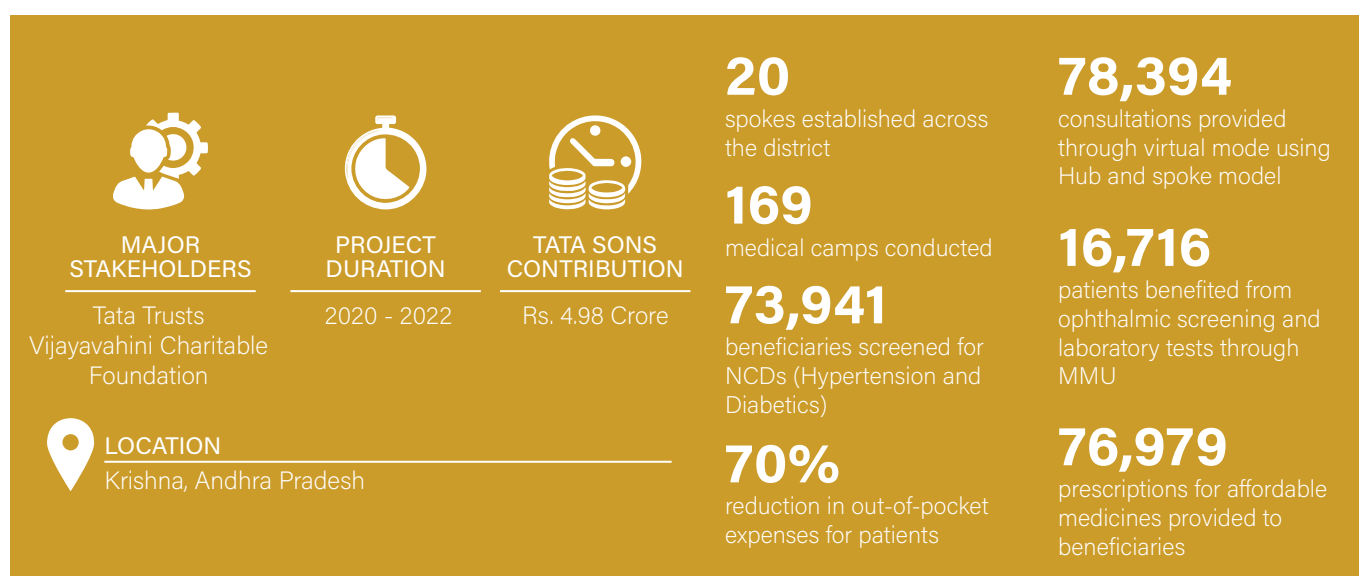


BACKGROUND:

The initiative "Swasth Kutumbam" was conceived with the objective of implementing a paradigm for Universal Health Coverage in the Vijayawada rural Parliamentary Constituency of the Krishna district in Andhra Pradesh. This comprehensive program aimed to extend its benefits to the residents of 265 Gram Panchayats within the constituency. A primary focus of the program was to prioritize screening efforts for Non-Communicable Diseases (NCDs).

The program has the following key features:

- Establishment of spokes in rural zones and maintain the quality of daily consultation provided through highly qualified doctors from the hub.
- The use of advanced telemedicine technology and integration with many devices make healthcare easy to access and simple to use.
- Promotion of a proactive approach to health and wellness
- Providing outreach services to the rural areas by two mobile medical units having healthcare staff including a medical officer, nurses, pharmacist, lab technician, and optometrist.



OUTCOME & IMPACT:

The broad outcome and impact of the Swasth Kutumbam Centers program are summarized below:

- The program's immediate impact has been significant, reducing healthcare costs and improving access to quality care, early detection of NCDs, and promoting a proactive approach to health and wellness. This has resulted in improved physical and mental well-being, enhanced productivity, and reduced absenteeism due to illness, as well as reduced morbidity and mortality rates.
- The program's enduring impact has brought sustainable changes in healthcare delivery and community health outcomes by creating a foundation for long-term improvements in healthcare access and quality.

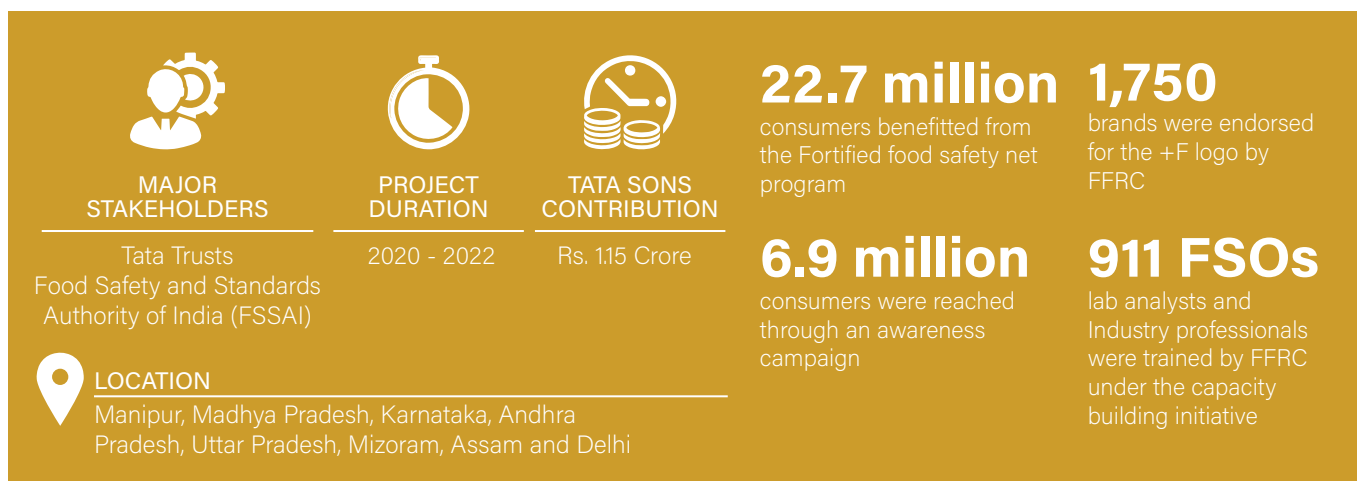
Project 14: Food Fortification Resource Centre (FFRC)



BACKGROUND:

Micronutrient deficiencies pose a significant public health challenge in India. To combat this issue, the Food Fortification Resource Centre was established within the Food Safety and Standards Authority of India (FSSAI). This dedicated center aimed to create a supportive framework for the fortification of staple foods throughout the country. The intervention was implemented in various states, including Manipur, Madhya Pradesh, Karnataka, Andhra Pradesh, Uttar Pradesh, Mizoram, Assam, and Delhi.

The program's primary objective was to raise awareness among the population about the advantages of consuming fortified foods. Additionally, it sought to sensitize state authorities about the importance of food fortification and encouraged its integration into Safety Net Programs, ultimately mitigating the incidence of micronutrient deficiencies.



OUTCOME & IMPACT:

The broad outcome and impact of food fortification are summarized below:





- Increase in the use of efficient technologies throughout the production, packaging, and transportation phases leading to the creation of safe, nutritious fortified foods and greater awareness amongst consumers of their benefits.
- Improved health and nutritional status of vulnerable sections of society, particularly children and mothers.
- Increased awareness among the community through its IEC activities about the benefits of food fortification which increases the reach of the fortified food.
- FFRC introduced 437 fortified product variants in the open market.
- Staple food fortification has scaled up and fortified edible oil reaches > 700 million persons daily, milk reaches > 110 million persons daily, rice reaches >10 million persons daily, DFS reaches >60 million persons daily.

Project 15: Supporting Statewide Distribution of Double Fortified Salt (DFS) through the Public Distribution System (PDS) in Jharkhand



BACKGROUND:

With the aim of scaling up the production and consumption of Double Fortified Salt (DFS) to consistently improve the iron intake of economically disadvantaged communities, Tata Trusts, through its India Nutrition Initiative (TINI), forged a collaboration with the government and crucial stakeholders. This comprehensive program was designed to enhance the capacity of frontline health workers, including Accredited Social Health Activists (ASHA), Auxiliary Nurses, and Midwives (ANM), as well as fair-price shop owners. Additionally, it placed significant emphasis on Information, Education, and Communication (IEC) initiatives concerning aspects such as entitlements and pricing.

 <p>MAJOR STAKEHOLDERS</p> <p>Tata Trusts Food and Civil Supplies Department</p>	 <p>PROJECT DURATION</p> <p>2020 - 2022</p>	 <p>TATA SONS CONTRIBUTION</p> <p>Rs. 1.35 Crore</p>	<p>32 million beneficiaries received DFS through the public distribution system</p> <p>5,000 IEC pieces distributed to vendor to display tableau on DFS</p>
 <p>LOCATION</p> <p>Jharkhand</p>	<p>24 district grass-root health worker and PDS vendors received capacity building training</p> <p>DFS successfully reduced iron deficiency and anemia among adolescent girls and women</p>		

OUTCOME & IMPACT:

The broad outcomes and impact of the Double Fortification of Salt program are summarized below:

- Reduced iron deficiency and anemia among adolescent girls and women of reproductive age thus improving quality of life.
- Improved energy levels and cognitive abilities resulting from the consumption of DFS contribute positively to income and thereby contribute to the flourishing of human capital.
- Increased awareness about the benefits of DFS consumption resulting in behavior change.
- Increase in the adoption and usage of DFS as it was made accessible and affordable. Further, it led to improved health outcomes.
- The program has effectively reached its target population through capacity-building training provided to field workers such as ASHA.

Health : OECD Analysis

RELEVANCE

RATING - 5

Tata Sons' health programs strategically tackle pressing concerns encompassing NCD prevention, cancer treatment, endemic disease control, nutrition through food fortification, and equitable access to high-quality healthcare services through cutting-edge technologies, especially in underserved regions. These comprehensive interventions hold immense relevance as they diligently endeavor to enhance the health outcomes of targeted populations, aligning with national and global priorities. Moreover, these initiatives augment the services provided by the public health delivery systems and thus play a pivotal role in nurturing human capital, fostering its development and prosperity.

Cancer Care Programs:

Tata Sons' comprehensive cancer care programs, implemented as part of their CSR intervention in health, exhibit exceptional relevance attributable to their multifaceted approach and the following key factors:

- **Affordable Cancer Care:** Acknowledging the increasing burden of cancer care in India, these programs aim to provide affordable cancer care by utilizing cutting-edge technology, offering support, and raising awareness. This approach helps in reducing cancer-related deaths by improving access to quality treatment and care.
- **Focus on Equity and Inclusivity:** The programs prioritize underprivileged patients, recognizing their unique challenges in accessing cancer care. By addressing these challenges and promoting equity, Tata Sons' initiatives ensure that quality cancer care is accessible to all, regardless of geographic location or financial capacity.
- **Cutting-edge technology and innovation:** Tata Sons' programs leverage cutting-edge technology in cancer treatment and diagnostics. By incorporating advanced technologies, these initiatives enhance the quality and effectiveness of cancer care delivery. Furthermore, the programs contribute to research and innovation in the field, promoting advancements in cancer treatment and improving healthcare practices.

NCD Program:

These programs are very relevant as they prioritize non-communicable diseases (NCDs) and promote early detection, healthy lifestyle modifications, and effective treatment. Leveraging technology and community engagement, they address the major health challenge of NCDs in India.

Pandemic and Epidemic Care Programs:

These programs play a crucial role in responding to public health crises, ensuring immediate support, strengthening healthcare systems, and safeguarding the long-term health and well-being of the population during epidemics and pandemics. Thus, they are high on relevance.

Nutrition Enhancement Programs:

- **Addressing Nutritional Security:** These programs are highly relevant as they address critical issues of hidden hunger, food security, and nutritional deficiencies, contributing to improved health outcomes and overall well-being.
- **Enhancing Health Outcomes & Well-being:** By implementing strategies such as food fortification and promoting the consumption of nutrient-rich foods, these programs aim to enhance the nutritional status of the population, particularly vulnerable groups, and combat the prevalence of malnutrition.
- **Promoting Awareness & Sustainable Dietary Practices:** The programs also play a vital role in creating awareness and educating communities about the importance of nutrition, thereby promoting positive behavioral changes and sustainable dietary practices.

COHERENCE

RATING - 5

The interventions are highly coherent with the following Sustainable Development Goals.



Additionally, they align well with the following National Programs and their goals:

- Pradhan Mantri Jan Arogya Yojana (PMJAY)
- Atal Amrit Abhiyan (AAA)
- Ayushman Bharat – Health and Wellness Centres, Digital Mission
- National Program for Prevention and Control of Cancer, Diabetes Cardiovascular Diseases and Stroke. (NPCDCS)
- National Health Mission
- Poshan Abhiyan
- Integrated Child Development Services
- National Nutritional Strategy – 2017

EFFECTIVENESS

RATING - 5

The health programs have demonstrated their effectiveness in achieving their objectives by implementing various strategies and interventions. Through improved access to quality healthcare services, enhanced disease prevention and control measures, and the promotion of health-seeking behaviors, these programs have successfully addressed critical health challenges and improved health outcomes.

Cancer & NCD Program:

- **Uniform & Affordable Cancer Care:** Decentralized treatments, reduced burden on apex hospitals, increased access to radiotherapy and chemotherapy in district centers, improved patient health, and reduced tobacco dependence.
- **Enhanced Cancer Care and Quality of Life:** Improved quality of life for cancer patients through awareness programs, financial assistance, and comprehensive care services, leading to increased screenings, diagnoses, treatments, and palliative care.
- **Personalized Treatment and Supportive Services:** Successfully met the goal of providing personalized treatment plans, supportive services, and increased screenings, diagnoses, treatments, and palliative care for cancer patients.
- **Advancements in Cancer Diagnosis & Treatment:** Achieved diagnostic accuracy, improved treatment outcomes, contributed to research and development and introduced new treatments and technologies.
- **Hub-Based Cancer Diagnosis & Treatment:** Created expertise exchange hubs, increased accessibility and affordability of cancer care, and centralized clinical guidelines and treatment protocols.
- **Community-Centric Cancer Care:** Promoted community awareness, conducted awareness sessions, and ensured accurate diagnoses and timely treatment for patients.
- **Non-communicable Disease (NCD) Screening:** Strengthened population-based screening, enabled prompt diagnosis and treatment through digital platforms, and aligned with national health policies.

Pandemic and Endemic Care Programs:

- **Vector-Borne Disease Diagnosis:** Rapid, accurate, and affordable diagnosis using advanced technology, minimizing the burden on healthcare workers, and reducing public health risks.
- **Effective COVID-19 Treatment Care at Sub-District Level:** Successfully provided quality treatment care to COVID-19 patients in Sangali and Buldhana districts, enhancing accessibility through upgraded sub-district hospitals equipped with state-of-the-art facilities.
- **Strengthened Primary Healthcare to Reduce AES Prevalence:** Effectively improved health-seeking behavior and primary healthcare services to reduce AES cases, incorporating national flagship programs and SDGs for enhanced effectiveness.
- **Strengthened Accessibility of COVID-19 Treatment Care:** Achieved the objective of extending support to COVID-19 patients by upgrading and developing hospitals with top-notch diagnostic tools and equipment in seven districts, ensuring access to quality care during the pandemic for rural communities.

Programs for Strengthening Public Health Institutions & Service:

- **Enhanced Access to Healthcare Services:** Established a 120-bed tribal-friendly hospital, effectively meeting primary healthcare needs, improving health outcomes, and ensuring equitable access to healthcare services for vulnerable populations.
- **Improved Primary Healthcare Delivery:** Established rural spokes and a district-level hub with skilled physicians, utilizing technology platforms for affordable and accessible primary healthcare, leading to successful achievement of predefined objectives and increased screenings for non-communicable diseases.

Effective Control of Communicable and Vector-Borne Diseases: Implemented rapid, accurate, and affordable diagnosis using advanced interventions and technology such as AI and mobile-app-based detection, reducing the burden on healthcare workers, and enabling rapid identification and reduction of public health risks.

Nutrition Enhancement Programs:

- **Promoting Food Fortification:** The Nutrition Enhancement Programs effectively promoted and supported food fortification initiatives throughout India, raising awareness and encouraging the adoption of fortified foods.
- **Stakeholder Engagement and Assistance:** These programs provided critical assistance to government ministries, food industry players, and development partners, supporting them in implementing food fortification strategies and ensuring the availability of fortified foods in the market.
- **Sustainable Solution for Micronutrient Deficiencies:** By establishing a robust supply chain ecosystem and promoting the widespread adoption of Double Fortified Salt (DFS), the programs addressed iron and iodine deficiencies, providing a sustainable solution to improve the nutritional status of the population.
- **Technical Support and Knowledge Dissemination:** The programs offered technical support to the food industry, assisting in DFS production methods and quality control. They also raised awareness and promoted research among industry professionals and academic scholars, facilitating the dissemination of knowledge on food fortification.

EFFICIENCY

RATING - 4.5

The health programs have demonstrated high efficiency in their implementation, showcasing effective resource allocation and utilization, collaborative approaches, diverse awareness activities, and participatory feedback collection mechanisms, ultimately leading to optimal management of resources and timely delivery of services.

Cancer & NCD Program:

- **Collaboration with Public Health Institutions:** Collaborating with organizations and hospitals to improve cancer care and make a positive impact on patient's lives, demonstrating efficiency in resource utilization.
- **Government Support and Outreach:** Efficient collaboration with the government to ensure accessible and affordable cancer treatment, supported by outreach services to rural areas utilizing government resources.
- **Advanced Technology and Optimal Resource Management:** Utilizing advanced nuclear medicine and radiation technology for accurate diagnoses and effective treatments, optimizing resource allocation for optimal management of human and material resources.
- **Infrastructure and Timely Delivery:** Establishing state-of-the-art cancer institutes and utilizing technical platforms for timely delivery of cancer and NCD care services, ensuring efficient utilization of resources and accessible healthcare.

Pandemic and Endemic Care Programs:

- **Collaboration and Strengthened Accessibility:** Effective alliance and collaboration with public health institutions and officials to strengthen accessibility and service delivery, ensuring efficient management of AES cases.
- **Agile Implementation and Optimal Resource Utilization:** Remarkable agility in recalibrating objectives and efficient utilization of existing infrastructure and human resources, contributing to the high efficiency of the program's implementation.
- **Timely Delivery and Effective Resource Utilization:** Close collaboration with public health institutions, including sub-district hospitals, in rural areas, resulting in the timely delivery of the program. Efficient utilization of resources, leveraging existing infrastructure and human resources, further attests to the program's efficiency.

Programs for Strengthening Public Health Institutions & Services:

- **AI-driven and Rapid Testing:** Interventions designed for AI-driven, rapid, cost-effective, and accurate testing with minimal infrastructure, enabling real-time reporting. This reduces the burden on the healthcare system and promotes efficiency.
- **Well-equipped Facilities and Specialized Staff:** Establishment of a well-equipped hospital with state-of-the-art facilities and specialized staff, ensuring efficient utilization of resources and timely delivery of healthcare services.
- **Agile Implementation and Optimal Resource Utilization:** Remarkable agility in recalibrating objectives and efficient utilization of existing infrastructure and human resources, resulting in highly efficient program implementation.
- **Timely Delivery and Effective Resource Utilization:** Close collaboration with public health institutions, such as sub-district hospitals, in rural areas, facilitating the timely delivery of the program. Effective utilization of resources further contributes to the overall efficiency of the program.

Nutrition Enhancement Programs:

- **Effective Resource Allocation and Utilization:** Optimal allocation and utilization of resources for IEC activities, capacity building, and awareness creation about food fortification, resulting in efficient implementation.
- **Collaborative Approach:** Strong collaboration with government officials, industry representatives, and consumers, leveraging partnerships to enhance program effectiveness.
- **Utilization of Digital Technology and Multimedia:** Utilization of online media, webinars, workshops, awareness campaigns, article publications, regional language short films, sensitization workshops, posters, and capacity-building programs to create awareness about nutrition enhancement, showcasing the program's operational efficiency.
- **Participatory Feedback Collection:** Incorporation of feedback collection mechanisms, such as on fortified rice consumption, fostering a participative approach and further enhancing program efficiency.

IMPACT

RATING - 4.5

The health programs have had significant impacts, including equitable access, reduced costs, enhanced well-being, preventive measures, and strengthened infrastructure. They have brought sustainable changes to public healthcare services, community health outcomes, and workforce development.

Cancer and NCD Program:

- **Access and Affordability:** The interventions have made cancer more accessible and affordable to a wider population. They have reduced out-of-pocket expenditures, provided financial support, and utilized advanced technologies to ensure high-quality care that is affordable and available even in rural areas.
- **Improved Health and Well-being:** The programs have resulted in improved physical and mental well-being of individuals, leading to enhanced productivity, reduced absenteeism, and improved quality of life. They have also contributed to a reduction in morbidity and mortality rates associated with cancer.
- **Skilled Workforce Development:** The programs have contributed to the development of a skilled healthcare workforce. Through training and capacity-building initiatives, healthcare professionals have gained specialized knowledge and expertise in cancer and NCD care, enhancing the overall capacity of the healthcare system.
- **Sustainable Healthcare Improvements:** The programs have created a foundation for long-term improvements in healthcare delivery and community health outcomes. They have fostered a culture of preventive healthcare, increased early detection of cancer and NCDs, and reduced healthcare costs through improved access to quality care and timely interventions.

Pandemic and Epidemic Care Programs:

- **Reduced Out-of-Pocket Expenses:** The programs have contributed to reducing out-of-pocket expenses for COVID-19 treatment by providing accessible and high-quality healthcare services. This has relieved the financial burden on individuals and increased the affordability of essential healthcare during pandemics and epidemics.
- **Upgraded Healthcare Facilities:** The programs have upgraded healthcare facilities to effectively respond to pandemics and epidemics. The establishment of COVID-19 treatment centers and the training of healthcare staff have improved the capacity and readiness of healthcare systems, resulting in better health outcomes beyond the immediate crisis.
- **Enhanced Community Healthcare:** The programs have successfully penetrated communities and provided uninterrupted healthcare services, reducing the prevalence of epidemic diseases in target areas and achieving high immunization rates, leading to improved community health.

Programs for Strengthening Public Health Institutions & Services:

- **Significant Advancements in Healthcare Infrastructure and Services:** The interventions have successfully achieved defined milestones and improved primary and tertiary public healthcare institutions, including pediatric care, leading to significant improvements in healthcare services and infrastructure.
- **Sustainable Diagnostic Solutions:** The user-friendly and easily deployable tools implemented by the interventions have enabled rapid, accurate, and affordable diagnosis of communicable and vector-borne diseases along with other critical ailments. This has reduced the burden on healthcare workers, enhances healthcare service delivery, and benefits a large section of the population in the long run.
- **Improved Healthcare Access for Marginalized Populations:** The intervention has had a significant impact on marginalized, rural, and tribal populations by providing access to quality and ethical healthcare services. This has led to improved health outcomes, reduced mortality rates, and acted as a platform for specialists to provide free diagnosis and treatment. The enduring impact addresses pressing healthcare needs promotes inclusive healthcare access, and reduces the marginalization of tribal communities.
- **Policy-Level Engagement:** Collaborations and dialogues with state governments and ministries have been used, indicating the interventions' relevance and importance in advocating for policy-level changes. This highlights the potential for long-term impacts in shaping healthcare systems and policies.

Nutrition Enhancement Programs:

- **Increased Adoption of Fortified Foods:** Immediate and lasting impacts observed through the increased adoption of fortified foods by citizens, leading to improved physical and mental well-being, increased nutritional security, enhanced productivity, and reduced absenteeism in schools.
- **Reduction in Morbidity and Mortality:** The program's efforts in disseminating knowledge about food fortification have contributed to the reduction of morbidity and mortality rates, benefiting the overall health of the population.
- **Communication and Advocacy Support:** The Communication and Advocacy component of the program has provided creative collateral support to the government and advocated for the adoption of food fortification in the state and open market, strengthening awareness and support for the initiative.
- **Technical Assistance for Implementation and Scaling Up:** Technical Assistance provided by the program has facilitated knowledge and experience sharing with key stakeholders, equipping them with the necessary expertise to implement and scale up food fortification efforts effectively, ensuring long-term impact and sustainability.

SUSTAINABILITY

RATING - 4.5

Cancer and NCD Program:

- **Sustained Enhancements in Cancer Healthcare:** Interventions prioritize long-lasting improvements in cancer healthcare delivery by emphasizing infrastructure development, capacity building, and evidence-based interventions. This approach ensures sustainable access to high-quality healthcare services and promotes enduring advancements in healthcare delivery.
- **Technology-driven and Enabled Approach:** Interventions utilize advanced technology, IT infrastructure development, high-end networks, telemedicine, and technology platforms to make cancer care and primary healthcare accessible, uniform, cost-effective, and scalable. This reduces disparities, lowers healthcare costs, promotes early detection of NCDs, and enhances the impact and sustainability of the interventions.
- **Patient-centered care:** Patient-centric approach and decentralized cancer care in regional hospitals reduce the burden on apex hospitals, while providing consistent, high-quality care. This increases accessibility, reduces out-of-pocket expenses, and enhances sustainability.
- **Prevention and awareness-building:** Emphasis on prevention, community awareness, and screening camps ensures long-term relevance and effectiveness. Early detection and referral prevent disease spread, reducing the burden on the healthcare system.
- **Strengthening existing institutions:** Programs align and strengthen existing public health delivery institutions and personnel, utilizing grassroots-level workers and IT support to ensure continuity and sustainability.
- **Government partnership:** Successful partnerships with the government make cancer treatment more accessible and cost-effective, reducing the need for higher healthcare interventions. This improves access to quality care, reduces costs, and promotes early detection and intervention.

Pandemic and Epidemic Care Programs:

- **Sustainable Strengthening of Healthcare Systems:** The interventions" focus on strengthening existing healthcare systems, lead to enduring improvements in health-seeking behavior, reduced prevalence of fever cases, and overall enhanced outcomes. This sustainable approach has the potential to transform public healthcare systems, making them more accessible, efficient, and robust. The community-based intervention models increase replicability and scalability, ensuring long-term impact.
- **Establishment of Permanent COVID-19 Treatment Facilities:** The interventions prioritized the creation of well-equipped, permanent hospitals in the project locations, collaborating with the state government and leveraging existing public health institutions. This sustainable approach not only minimized the spread of COVID-19 and treated cases effectively during the pandemic but also ensured continued healthcare services for the communities even after the pandemic subsided.

Programs for Strengthening Public Health Institutions & Services:

- **Improved access to quality healthcare:** Permanent hospitals, such as the one instituted in Gadchiroli, provided essential healthcare services to rural, tribal, and underserved populations, ensuring sustained access to quality care.
- **Enhanced infrastructure and facilities:** The interventions provided critical infrastructural inputs, such as state-of-the-art diagnostic services and technology integration, ensuring long-term sustainability and effective delivery of healthcare services in healthcare institutions.
- **Focus on preventive and promotive healthcare:** The interventions raised awareness among marginalized and underserved populations about maintaining good health, promoting sustainable healthcare practices, and reducing the burden of disease.

Nutrition Enhancement Programs:

- **Community-centered approach:** The sustainability of the interventions lay in their community-centered design, capacity building, and engagement with community members, government officials, and industries on food fortification.
- **Capacity building and stakeholder engagement:** The interventions' sustainability was achieved through capacity-building efforts targeting community members, government officials, and industries. It enhanced knowledge on food fortification, addressing hidden hunger, and improving nutritional security for long-term sustainability.
- **Community feedback mechanism:** The sustainability of the interventions was strengthened by a community feedback mechanism, ensuring ongoing engagement, responsiveness to community needs, and continuous improvements for a lasting impact on nutrition.

WaSH

Project 16: Water, Sanitation & Hygiene (WaSH) Project

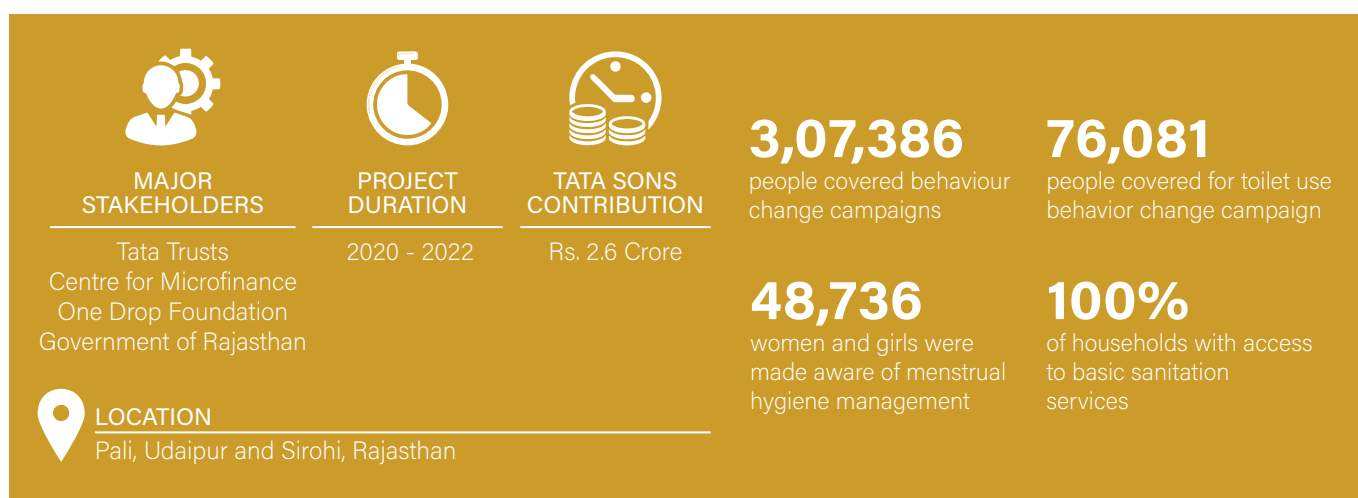


BACKGROUND:

Tata Sons CSR funding supported Tata Trusts/ TEDT to launch a groundbreaking WaSH project in Rajasthan in collaboration with One Drop Foundation and Government of Rajasthan. This integrated development project aimed to empower and strengthen community institutions, enabling them to adapt and grow in response to the evolving needs of the communities they serve. The program was implemented in selected blocks of south Rajasthan, including Abu Road, Pindwara (Sirohi district), Bali (Pali district), Sayra, and Gogunda (Udaipur district). By targeting these specific areas, the initiative aimed to maximize its impact and drive sustainable development in the region.

The intervention has following key components:

- Creating a high level of awareness in the community about using WaSH facilities and ensuring access to and use WASH services/facilities.
- Promotion of adequate WaSH behaviors through the folk art-based approach to communication.
- Building community-based connections promoting a participatory approach to increase WaSH behaviors thereby reducing WaSH-related health problems.



OUTCOME & IMPACT:

The broad outcome and impact of the Water, Sanitation & Hygiene (WaSH) program are summarized below:

- An increase in sustainable access to land and use of WaSH facilities/services by the entire community led to improved health outcomes.
- Increased health and hygiene of the community as there has been a reduction in the spread of water-borne diseases.
- Improved gender equality in the community as through intervention women and girls were provided with access to safe and private toilets freeing up time and energy that was previously spent on fetching water.
- Enhanced economic opportunities of the community by reducing the burden of disease, freeing up time for productive activities thus attracting investments to rural communities.
- Strengthened community cohesion led to improved social capital.

Project 17: Springshed Development Program under WaSH in Nagaland

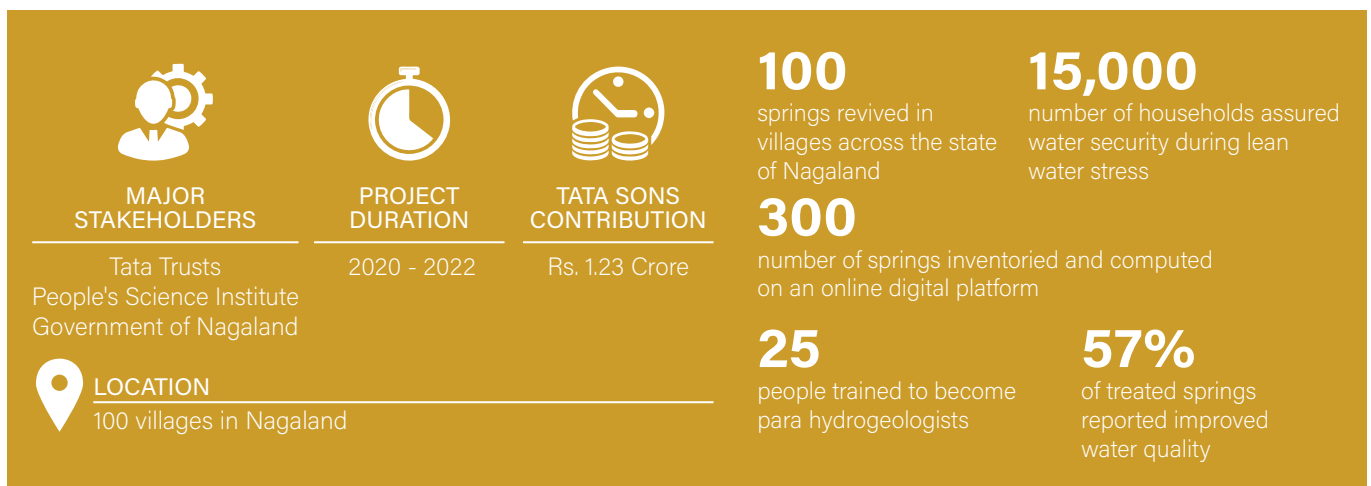


BACKGROUND:

A collaborative effort between the North East Initiative Development Agency (Tata Trusts), the Government of Nagaland (GoN), the Advanced Centre for Water Resources Development and Management (ACWADAM), the Rural Development Department, the Land Resources Department, the People's Science Institute (PSI) was undertaken to ensure water security for 100 rural villages in Nagaland. The project spanned three years and employed a scientific approach to springshed management. The intervention's primary objective was to implement a robust plan for revitalizing, conserving, and managing springsheds, thus ensuring long-term water security for the selected villages. Through technical expertise and strategic interventions, the project aimed to enhance water availability and sustainability in the targeted communities.

The intervention has following key components:

- Creating a high level of awareness in the community about water security by building the capacity of communities in spring rejuvenation and conservation.
- Developing capacities at various levels of state entities, including the village, district, and state, to manage spring sheds using a science-based and participatory approach.
- Strengthening community-level institutions that promote a participatory approach to spring shed management and thus sustain the intervention at the community level.
- Collaborating with multiple partners and using technology-based solutions to ensure the availability of spring water during the lean season.



OUTCOME & IMPACT:

The broad outcome and impact of the program are summarized below:

- Increased availability of drinking water in lean season discharge in spring resulted in improved health outcomes, reduced acute drinking water shortage, and enhanced quality of life.
- Improved gender equality as the Program helped in reducing women's workload. This reduction in drudgery allowed women to participate in other income-generating activities, empowering them and their families.
- Enhanced economic opportunities of the community by reducing the burden of disease, freeing up time for productive activities thus attracting investments to rural communities.
- Enhanced community cohesion and groups taking responsibility for the program's results thus improved social capital, cultivated a feeling of community, and encouraged teamwork.

WaSH : OECD Analysis

RELEVANCE

RATING - 5

The WaSH interventions are highly relevant as they address pressing needs and challenges related to water, health, and long-term well-being. They focus on improving water security, promoting key water behaviors, and increasing access to water-efficient practices, enhancing the quality of life for underprivileged households. The provision and promotion of WaSH facilities also contribute to gender equality, which is a significant issue in the target communities. The participatory approach adopted by the interventions and use of folk art-based communication empowers and engages community members, ensuring cultural appropriateness and relatability.

COHERENCE

RATING - 5

The WaSH interventions are very coherent as they align with several Sustainable Development Goals.



EFFECTIVENESS

RATING - 5

The WaSH interventions have demonstrated their effectiveness in achieving their primary goals by:

- **Promoting behavior change:** The program's comprehensive approach and community participation have led to remarkable positive behavior change, such as increased toilet use, improved hygiene practices, key water behaviors, and increased water-efficient practices.
- **Improving community well-being:** The interventions have resulted in significant improvements in the hygiene and sanitation of the target communities, leading to a reduction in water-borne illnesses and an overall enhancement of community well-being. Further, the interventions have worked towards enhanced water security and reduced gender inequality.
- **Contributing to sustainable development:** The program's ability to meet its primary objectives and bring about long-lasting changes in water, sanitation, and hygiene practices highlights its effectiveness in contributing to sustainable development and improving the quality of life for community members.

EFFICIENCY

RATING - 4.5

The WaSH interventions demonstrated an efficient utilization of resources and timely delivery owing to their community-centered approach, effective communication strategies, and strong collaborations with key stakeholders.

- **Tailored Interventions:** The program's community-centered approach ensured interventions that were tailored to the unique needs and cultural practices of the community, increasing the likelihood of successful adoption of WaSH practices and behaviors.
- **Effective Communication:** Utilizing folk art as a medium, the program effectively communicated and resonated with the local community, fostering a sense of ownership and participation in the interventions.
- **Collaboration and Partnerships:** Close collaboration with key stakeholders such as Tata Trusts, One Drop Foundation, and government agencies has provided access to necessary resources, expertise, and support. This has facilitated the establishment of robust networks and partnerships, creating a sustainable platform for future interventions.

IMPACT

RATING - 4.5

The WaSH interventions have had significant short-term and enduring impacts on the target communities.

- **Enhanced Water Security:** The program has had a high impact on water security by adopting a scientific approach to springshed management, ensuring the availability of clean drinking water even during lean seasons in rural communities.
- **Improved Health and Hygiene:** The program's interventions have resulted in significant improvements in the health and hygiene of community members, reducing the burden of water-borne diseases and promoting overall well-being.
- **Economic Opportunities:** The reduction in the burden of diseases and improved water access have made the communities more attractive for investments, creating long-term economic benefits and enhancing livelihood opportunities.
- **Community Empowerment:** The program's community-centered approach has empowered community members to take ownership of WaSH facilities and practices, fostering a sense of responsibility and active participation in sustaining the program's impacts.
- **Social and Environmental Impact:** The program has fostered community cooperation and collective action while contributing to environmental conservation through the preservation of springs and sustainable water use practices, ensuring long-term water availability and resilience to climate change.

SUSTAINABILITY

RATING - 4.5

- **Sustainable Behavior Change:** The interventions have resulted in notable shifts towards more positive behaviors in water use and hygiene practices.
- **Alignment with National Agenda:** The program's alignment with the national agenda of promoting WaSH services ensures its relevance and continuity in addressing community needs.
- **Strong Partnerships: Strategic Partnerships:** The program's strong partnerships with government and NGOs play a crucial role in its sustainability. These partnerships provide valuable access to essential resources and expertise, avoiding duplication of effort and fostering synergy.
- **Community Empowerment:** Through effective systems, processes, and community engagement, the program empowers community members to take ownership of their health and hygiene practices, leading to sustainable behavior change and creating a platform for future initiatives.

Education and Sports





Project 18: Welfare Program for Ex-Servicemen and their Dependents in Uttar Pradesh



BACKGROUND:

The Uttar Pradesh Sainik Punarvas Nidhi is a government-driven initiative with the objective of offering welfare schemes to ex-defense personnel and their dependents. Tata Sons, through the Tata Education and Development Trust (TEDT), extended partial support to this program, primarily through stipend grants and grants related to institutions like NDA/IMA/OTA. The central focus of the initiative was to provide scholarships for the education of children, with the Uttar Pradesh government taking the lead in its conceptualization and direct implementation.

- Imparted general stipended grant for class 9th upto PhD holder amount is Rs.6,500/- to Rs.11,000/- per candidate per year. This grant to UPSPN was to provide Scholarship towards Ex-Servicemen from high-school to post-graduate level with scholarship amounts ranging from Rs.5000/- to Rs.50,000/-. The support also included one-time scholarship grant to those that qualify for armed forces training at NDA at 6th Scholarship trainship institutes.

 MAJOR STAKEHOLDERS Tata Trusts U P Sainik Punarwas Nidhi	 PROJECT DURATION 2020 - 2022	 TATA SONS CONTRIBUTION Rs. 1.70 Crore	2,356 beneficiaries directly got benefited from the scholarship	94 beneficiaries was awarded one time grant for NDA/ IMA, etc
 LOCATION Uttar Pradesh	Rs.13,000/- to Rs.30,000/- grant per recipient for technical education		Rs.6,500/- to Rs.11,000/- stipend per candidate per year from class 9th up to Ph.D.	

OUTCOME & IMPACT:

The broad outcome and impact of the program are summarized below:

- 2,356 beneficiaries directly get benefited from the scholarship.
- Scholarships enabled dependents of ex-defense personnel to access quality education at all levels increasing education level and employability enhancement.

Project 19 : Badminton Initiative in Chhattisgarh



BACKGROUND:

Tata Sons recognizes the immense potential of sports as a tool for promoting peace and development. Sport has been proven to be a cost-effective and flexible means of advancing social progress, as acknowledged by the United Nations in numerous resolutions, including the 2030 Agenda for Sustainable Development. Against this backdrop, Tata Sons has taken concrete steps to develop sports in India, with a particular focus on nurturing young talent and promoting the country as a multi-sporting nation. In collaboration with the ITM Trust, and renowned coaches Sanjay Mishra and Pulela Gopichand, with Tata Sons CSR funding, TEDT has helped establish a cutting-edge badminton academy in Raipur, Chhattisgarh.

The academy puts a particular emphasis on developing talent from nearby tribal groups in the state and adjacent regions. Tata Sons recognizes the significant contributions that sports can make to promoting tolerance and respect, and the academy has served as an important tool for empowering women and local youth in the region. By providing access to high-quality sports facilities and education, the academy has contributed to health, education, and social inclusion objectives in the region.



MAJOR STAKEHOLDERS

Tata Trusts
ITM Trust



PROJECT DURATION

2020 - 2022



TATA SONS CONTRIBUTION

Rs. 2.35 Crore

Every year 40

tribal students will receive special badminton training through the renowned coaches along with quality education

Setup is creating a sporting environment among students

Infrastructure ensures safety and a pleasant experience for players



LOCATION

Raipur, Chhattisgarh

Players are able to complete their studies along with badminton training. This is helping children focus on training while also completing their education.

OUTCOME & IMPACT:

The broad outcome and impact of the program are summarized below:

- The physical and mental health of the tribal children will get increased and will be able to achieve academic milestones.
- Promoting economic development in the region through students and people in the industry by providing livelihood opportunities.
- Upliftment of tribal students through quality education and opportunity in sports

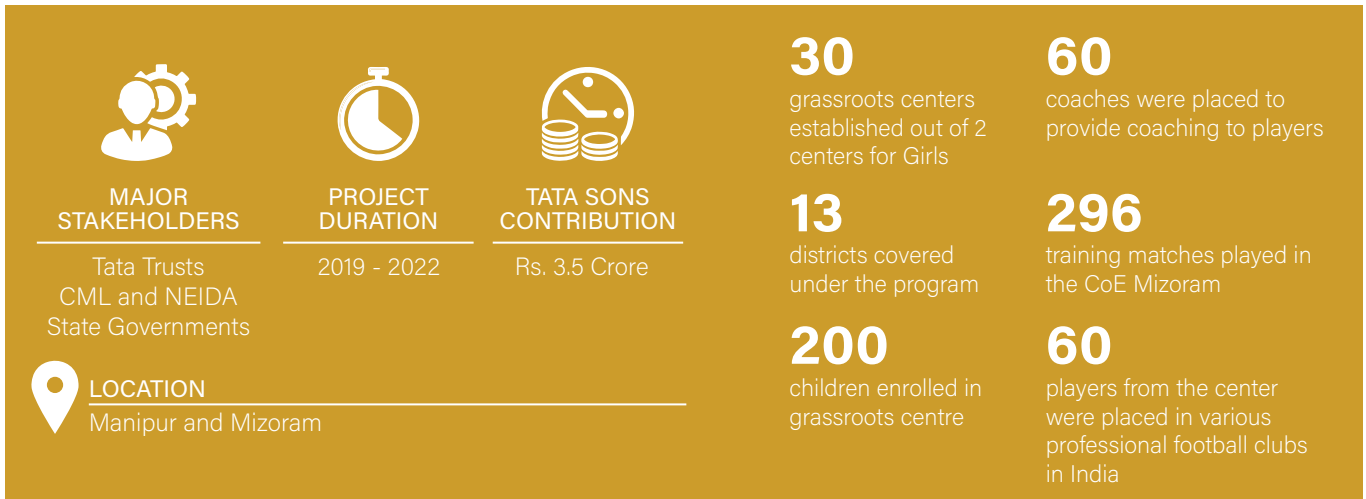
Project 20: Grassroot Development of Indian Football



BACKGROUND:

Tata Trusts' football program placed a special emphasis on cultivating talent from the northeastern region of India. Its primary focus was on early interventions with children, aimed at instilling physical, social, and cognitive skills in them. Through this program, the Trusts established a successful model for grassroots football development that is both replicable and instrumental in the ongoing revolution of Indian football. The program sought to enhance the standards of Indian football while creating livelihood opportunities in underdeveloped regions. Tata Sons CSR funding was effectively utilized in this program.

In collaboration with the Tata Trusts, the Government of Mizoram, the Mizoram Football Association (MFA), the North East Initiative Development Agency (NEIDA), and the Centre for Microfinance and Livelihood (CML) played a crucial role in formulating and implementing the football program. The program offered holistic development to 30 selected boys aged between 13 and 15 years, providing them with the best possible coaching, diet, infrastructure, structured training, and competitive participation. The budding footballers received high-level coaching, fully residential accommodation, and access to a fully-equipped physiotherapy room. Initially, the program was designed to cover grassroots development, center of excellence, and sending players to Germany on scholarships. However, due to administrative challenges, the program was scaled down to focus on setting up Manipur Grassroots and the Centre for Excellence, Mizoram. Additionally, the program aims to create a pathway for players to play at professional clubs by providing them with high-quality training.



OUTCOME & IMPACT:

The broad outcome and impact of the program are summarized below:

- 2000 students enrolled and received support through the newly established 30 centers.
- 60 players from the center got selected by the football clubs.
- Sports culture has been encouraged in the area and the perspective of the people towards sports has been changed.
- Youth from the area got employment opportunities, and people from the sector got the opportunity to secure the livelihood.

Education : OECD Analysis

RELEVANCE

RATING - 5

The interventions in education and sports directly address the specific challenges faced by the target communities in their pursuit of socio-economic development, making them highly relevant.

- **Welfare Program for Ex-Servicemen and Their Dependents:** The program's provision of educational scholarships addresses the economic and educational challenges faced by dependents of ex-defence personnels. This intervention promotes equal education and opportunities by offering access to quality education at all levels, regardless of financial status, thus contributing to their overall socio-economic development.
- **Badminton Initiative:** The establishment of a cutting-edge badminton academy in Chhattisgarh addresses the lack of accredited academies in India and promotes physical activity, well-being, social inclusion, and economic development. Access to education and sports science provides livelihood opportunities and contributes to the region's economic growth.
- **Grassroot Development of Indian Football:** The football program tackles the developmental needs of a region plagued with unemployment and lack of aim among the youth. It nurtures young footballing talents, providing opportunities for their professional growth and success. The program also generates income and employment opportunities for coaches, contributing to the overall development of the region and addressing the issue of poverty.

COHERENCE

RATING - 5

The interventions show a robust coherence as they align with the following Sustainable Development Goals:



The interventions also align with the following National Programs and goals:

- National Sports Policy 2001
- National Education Policy 2020
- Khelo India Scheme 2018

EFFECTIVENESS

RATING - 5

Intervention in Education & Sports has demonstrated its effectiveness in achieving its primary goals.

Welfare Program for Ex-Servicemen and Their Dependents:

- The program has successfully accomplished its goals of providing educational scholarships and one-time financial assistance to the dependents of Ex-Defence personnel.
- This has led to an improvement in their standard of living and created opportunities for their education.
- The program's achievement of its primary objectives and contribution to fostering quality education make it highly effective.

Badminton Initiative:

- The program has effectively established a state-of-the-art badminton academy in Chhattisgarh.
- The academy provides the necessary infrastructure to nurture talented young athletes and develop top-tier players.
- By offering access to education and sports science, the academy creates opportunities for students to pursue careers in sports management, contributing to the region's economic growth.
- The program's focus on achieving key developmental objectives, such as promoting physical activity, well-being, social inclusion, and economic development, further highlights its effectiveness.

Grassroot Development of Indian Football:

- The program has demonstrated high effectiveness in providing football training to disadvantaged youth and facilitating their connections with local and state football clubs.
- Through comprehensive interventions encompassing sports, life skills, and academics, the program has successfully engaged with underprivileged children and supported their holistic development.
- The program's accomplishment of its primary objectives and its positive impact on sustainable development make it a resounding success, showcasing its effectiveness in transforming the lives of young footballers in the region.

EFFICIENCY

RATING - 4.5

Welfare Program for Ex-Servicemen and Their Dependents: The program's collaboration with key stakeholders and government entities has ensured efficient utilization of resources and access to necessary support, contributing to the program's effectiveness in providing financial relief and promoting further education for the dependents of Ex-Defence personnel.

Badminton Initiative:

- The program's collaboration with renowned badminton professionals, along with financial and operational support from the ITM Group of Institutes, ensures efficient utilization of resources and adherence to international standards at the academy.
- The program's application for recognition from Khelo India further demonstrates its commitment to utilizing the best available resources.

Grassroot Development of Indian Football:

- The program's collaboration with the Government of Mizoram has facilitated the efficient implementation of sports training initiatives, including high-quality training, dietary facilities, accommodation, and physiotherapy services.
- The program has effectively increased direct employment opportunities for trainers and coaches, contributing to the efficient utilization of resources.
- The program's ability to achieve intended outcomes in a timely and cost-effective manner, while minimizing resource waste, highlights its overall efficiency.

IMPACT

RATING - 4.5

Welfare Program for Ex-Servicemen and Their Dependents:

- The program's provision of scholarships for further education has had an immediate positive impact on the lives of dependents of Ex-Defence personnel, providing them with opportunities for higher education and career development.
- The enduring impact of the program is significant, as the education and skills acquired by the beneficiaries contribute to their socioeconomic well-being and overall development, benefiting their families and communities.

Badminton Initiative:

- The program's impact is both immediate and enduring, as players have the opportunity to pursue education alongside badminton training, and students from across the country have access to schooling and college options.
- The program's impact on talented young athletes extends beyond their immediate development, contributing to the overall development of the region in terms of sports, skills, and opportunities.

Grassroot Development of Indian Football:

- The program's impact is immediate, providing employment opportunities for unemployed youth through standardized coaching training and creating livelihood and economic benefits.
- The program's enduring impact lies in its capacity-building efforts and promotion of sportsmanship at the grassroots level, leading to increased interest in football, job opportunities, economic activity, and overall socio-economic development in the region.

SUSTAINABILITY

RATING - 4.5

The interventions encompass essential components of sustainability owing to strong collaborations with the government and other stakeholders, the institution of permanent structures and facilities, and the creation of a cadre of trained professionals.

Welfare Program for Ex-Servicemen and Their Dependents:

- Collaboration with the government and key stakeholders strengthens the program's ability to address economic and educational challenges, fostering a shift towards higher quality education and greater opportunities.
- The program's focus on education and financial support empowers beneficiaries for future educational and career opportunities, contributing to the overall economic sustainability of families.

Badminton Initiative:

- The program's sustainability is ensured through the establishment of permanent infrastructure and facilities, along with a cadre of trained professionals to nurture talent.
- The program's emphasis on promoting a sports culture and inclusiveness fosters long-lasting benefits for physical activity, well-being, social inclusion, and economic growth of the region.

Grassroot Development of Indian Football:

- The program's sustainability is rooted in strong collaboration with the government and stakeholders, providing access to resources, expertise, and support.
- The program's long-term perspective, focus on capacity building, and holistic development of young footballers ensure their sustained success and contribution to the sports ecosystem of the region.

Innovation





Project 21: National Urban Stack – Improve Data-Driven Urban Governance



BACKGROUND:

Digital Infrastructure for Governance, Impact, and Transformation (DIGIT) is an open-source platform, set up as a public good, to allow government entities, businesses, startups, and civil society to use a unique digital infrastructure and build solutions for service delivery and governance. It enables seamless collaboration between government entities and provides decision-makers with the necessary data to enhance delivery of municipal services.

Tata Sons through Tata Education and Development Trust (Tata Trusts) partnered with eGov Foundation to implement DIGIT in selected states, powering digital transformation across urban and rural administration, sanitation, healthcare, and public finance management. DIGIT's benefits extend beyond these domains, with partners in other sectors leveraging its capabilities. Currently, the platform under this project implements five services that are live and used by citizens. DIGIT platform was built for use by Municipalities.

 MAJOR STAKEHOLDERS Tata Trusts eGov Foundation	 PROJECT DURATION 2020 - 2022	 TATA SONS CONTRIBUTION Rs. 4.35 Crore	250 million citizens impacted by Digit platform	280+ tech services enabled
			40% reduction in application processing time	3.5 million grievances resolved
 LOCATION Pan India			96% complaint resolution rate	6,00,000+ trade licenses issued
			Rs. 120 Billion revenue generated through the platform	

OUTCOME & IMPACT:

The broad outcome and impact of the program are summarized below:

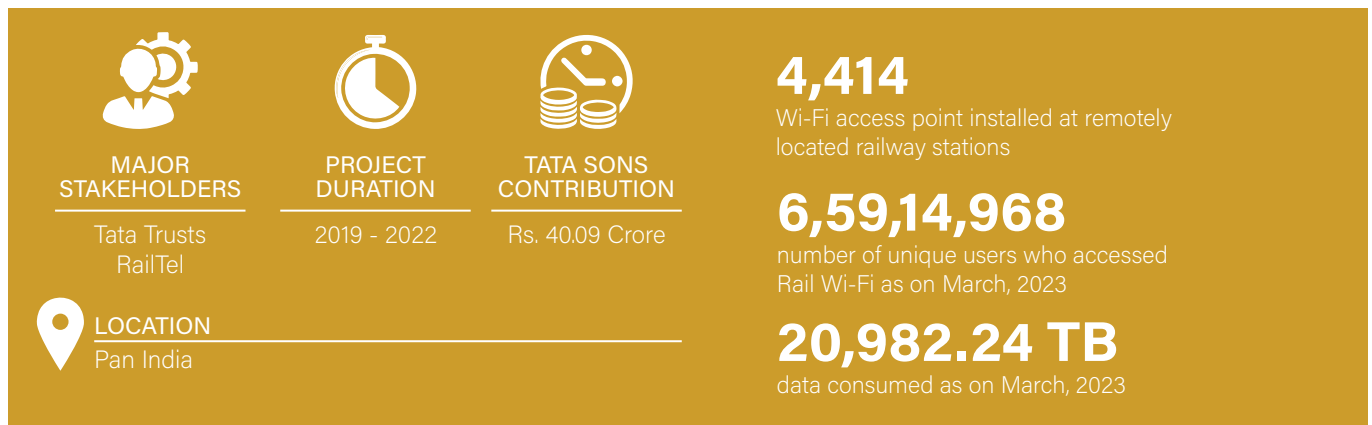
- 250 million citizens reached through DIGIT, 3.5 million grievances resolved, 280+ tech services enabled.
- Through the DIGIT property tax portal, a total of Rs.120 Bn+ revenue was collected as well as assessed 6Mn+ properties for tax collection.
- The platform has improved productivity and adoption due to its user-friendly interface, allowing local governments to deliver programs in a simplistic way and increase their reach.
- DIGIT has had a significant impact on the various dimensions of people's lives, including access to clean water and better livelihoods, contributing to the development of communities. The platform has also led to a change in people's behavior, with citizens taking responsibility for the development of their community and demanding better services.
- Real-time data collected through DIGIT is now being used by policy makers and program designers.

Project 22: Rail Sahyog (Enabling Access to Wi-Fi)



BACKGROUND:

In March 2019, the Indian Railways, RailTel, and the Tata Education and Development Trust (TEDT) entered into a Memorandum of Understanding (MoU) to facilitate Wi-Fi-based internet access services across 4791 railway stations in India. The prime objective of this collaborative initiative was to transform railway stations into hubs for digital inclusion. By offering high-speed broadband solutions at these stations, the project aimed to bridge the digital divide between urban and rural areas, ensuring connectivity and accessibility for all.



OUTCOME & IMPACT:

The broad outcome and impact of the program are summarized below:

- 4414 Wi-Fi Access points were installed.
- Total of 6,59,14,968 unique users accessed Rail Wi-Fi facility since launch.
- Total of 20,982.24 TB of data consumed.
- Access to high-speed internet services at rural/low population density area railway station.
- Bridging the digital divide gap between rural and urban population.

Innovation : OECD Analysis

RELEVANCE

RATING - 5

These interventions under Innovations are highly relevant as they leverage technology to enhance urban governance, improve data-driven decision-making, and enhance the efficiency and convenience of public services.

National Urban Stack: Improved Data-Driven Urban Governance:

- Enhances urban governance through improved data-driven decision-making.
- Provides an easy-to-use interface for citizens to access government services and information.
- Enables policymakers to gain valuable insights into citizens' needs.
- Facilitates the development of effective schemes and programs to address urban challenges.

Rail Sahyog:

- Adds extra dimension to railway services and accessibility.
- Improves Internet connectivity and enhances the rail travel experience.
- Promotes operational efficiency in railway operations.

COHERENCE

RATING - 5

The interventions show a robust coherence as they align with the following Sustainable Development Goals:



The interventions also align with the following National Programs and goals:

- Digital India
- Urban Development (Smart ULBs)

EFFECTIVENESS

RATING - 5

The programs are effective in improving governance and service delivery by leveraging technology to enhance citizen-government interactions and provide convenient access to essential services.

National Urban Stack: Improved Data-Driven Urban Governance:

- The program has effectively achieved its goals by providing citizens with easy access to government services and information through a user-friendly interface on their mobile phones.
- This direct link between citizens and the government has facilitated data-driven decision-making and allowed policymakers to gain valuable insights into the needs of the people, leading to the development of effective schemes and programs.
- The program's success in improving urban governance through technology has made it highly effective in enhancing service delivery and responsiveness to citizens' needs.

Rail Sahyog:

- The program has demonstrated remarkable effectiveness in establishing internet access centers at railway stations and providing high-speed Wi-Fi services as per its predefined goals.
- By meeting its objectives, the program has enhanced connectivity and convenience for railway passengers, contributing to a positive and seamless travel experience.
- The program's collaboration with the government in ensuring accessible and affordable internet services showcases its commitment to operational efficiency and improving the overall quality of railway services.

EFFICIENCY

RATING - 4.5

The programs demonstrate efficiency through the effective utilization of technology, user-friendly interfaces, and strategic collaborations, resulting in improved accessibility, transparency, and cost-effectiveness in service delivery.

National Urban Stack: Improved Data-Driven Urban Governance:

- The program demonstrates high efficiency by leveraging technology and user-friendly apps and portals, ensuring easy accessibility and transparency for a large population.

Rail Sahyog:

- The intervention efficiently utilizes high-end Wi-Fi technology at rural railway stations, collaborating with the government railway infrastructure and achieving cost-effectiveness and smooth operations.

IMPACT

RATING - 4.5

The interventions have had immediate and lasting impacts on the adolescents and youths they benefitted.

National Urban Stack: Improved Data-Driven Urban Governance:

- Citizen-led design and implementation have led to greater buy-in and a higher impact on the community.
- The direct link between citizens and the government through a digital platform has improved service delivery efficiency and effectiveness.
- Real-time data has enabled policymakers to identify gaps in delivery mechanisms and make necessary improvements, resulting in improved access to necessities and a sense of ownership among citizens.

Rail Sahyog:

- Reduced out-of-pocket expenditure and increased accessibility of internet services for people in rural areas.
- Bridged the digital divide and made internet services accessible to rural communities.
- The use of advanced technology, such as high-speed internet at railway stations, has improved connectivity, access to information, and opportunities for social and economic growth, empowering people in rural areas.

SUSTAINABILITY

RATING - 4.5

The interventions under Innovations are sustainable due to their focus on open-source technology, adaptability to changing needs, collaboration with government entities, cost-effectiveness, and operational efficiency, ensuring long-term viability and impact.

National Urban Stack: Improved Data-Driven Urban Governance:

- The development of an open-source tech platform as a digital public good ensures its wide adoption and long-term sustainability.
- The program's flexibility and ability to evolve with changing circumstances contribute to its ongoing relevance and effectiveness.
- The program's focus on staying up-to-date with technology trends ensures its ability to keep up with rapid advancements and maintain its sustainability.

Rail Sahyog:

- Collaboration with the government and railways has led to the installation of Wi-Fi access points at railway stations, resulting in enduring impacts on the internet accessibility.
- Monetization of the network beyond free usage and offering suitable plans for longer usage contribute to the program's sustainability.
- The program's cost-effectiveness and operational efficiency have established a sustainable model for providing internet services in rural and low-density areas.

Rural Upliftment

Project 23: Rural Transformation in Endemically Poor Regions through Women Collectives



BACKGROUND:

With the support of Tata Sons, the Tata Education & Development Trust undertook a transformative intervention in the remote tribal regions of Chhattisgarh and Madhya Pradesh, India. The program was designed to revolutionize resource management and livelihoods in these areas. It focused on scaling up livelihood opportunities, particularly through women-centric interventions. The program also aimed to strengthen livelihood-based initiatives and initiate a transition by fostering people's organizations, enabling sustainable development and empowerment within these communities.

The key components of the program are as follows:

- Fostering the development of land and water resources as well as other assets to ramp up livelihood intervention by leveraging public resources available through flagship programs like Mahatma Gandhi National Rural Employment Guarantee Scheme (MGNREGS), National Rural Livelihoods Missions (NRLM) and various poverty alleviation programs.
- Promoting and nurturing women's collective to get involved in livelihood planning and implementation along with livelihood asset creation and saving and credit activity in order to bring transformative change in women's empowerment.
- Promoting livelihood interventions for women not only increases the income but contributes to the nutritional security of the family and thus of the community.



MAJOR STAKEHOLDERS

Tata Trusts
PRADAN



PROJECT DURATION

2019 - 2022



TATA SONS CONTRIBUTION

Rs. 7.34 Crore

14,950

number of training conducted for strengthening group functioning of SHGs

40,984

number of women who were supported to develop land and water resources

16

farmer's producer company (FPC) promoted

1,900

number of households who were supported in fish rearing in farm ponds created under MGNREGA



LOCATION

Chhattisgarh and Madhya Pradesh

7,538

number of women who were supported in mushroom cultivation and setting up of small enterprises

OUTCOME & IMPACT:

The broad outcome and impact of the Rural Transformation in Endemically Poor Regions through Women Collectives are summarized below:

- Increase in earnings through cocoon production and reeling silk yarn in Madhya Pradesh.
- Increased income at the household level of farmers associated with the intervention through the deepening of livelihood intervention like the creation of livelihood assets, and diversified livelihood choices.
- Enhanced gender equality in the community as the program created more opportunities for women farmers to increase their income.
- Increased nutritional intake of the community resulted in a healthier and more productive community.

Project 24: Aspirational District Fellowship Program



BACKGROUND:

In 2018, the Ministry of Home Affairs and Tata Trusts partnered to implement the Transformation of Aspirational Districts Program (TADP) in 35 districts. This collaboration aimed to provide technical support and strategic planning for effective program delivery in key thematic areas. Aspirational District Fellows (ADFs), equipped with skills and a "change-leadership" experience, played a crucial role in implementing the program at the district level. Their responsibilities included running the Transformation of Aspiration District Cell, analyzing district data, engaging stakeholders, introducing innovative practices, and documenting thematic issues.

The key components of the program are as follows:

Aspirational District Resource Cell at MHA

- Liaison with MHA, NITI Aayog, and other Central Ministries for planning and monitoring of TADP.
- Analyze data and provide recommendations for prioritizing interventions.
- Mentorship of fellows.
- Prepare the Resource Envelope and assist in resource mobilization.

Fellowship Support Team at TRIF

- Provide administrative support for fellows' leaves, salaries, reimbursements, etc.
- Offer capacity building support for implementing the TADP program at the district level.
- Design a structured learning and mentorship program to enhance fellows' work.
- Coach fellows in professional and soft skill development.
- Facilitate discussions with sector experts and share learning materials with fellows.



MAJOR STAKEHOLDERS

Tata Trusts, TRIF, NITI Aayog



PROJECT DURATION

2019 - 2022



TATA SONS CONTRIBUTION

Rs. 4.59 Crore

45%

DMs said quality of work by Fellows exceeded expectations

55%

DMs said quality of work by Fellows met expectations

Aspirational District Fellows provided outstanding support to District Administration during Covid-19 as part of the Control Room



LOCATION

35 districts in seven states (Maharashtra, Bihar, Andhra Pradesh, Chattisgarh, Jharkhand, Odisha, and Telangana)

OUTCOME & IMPACT:

The broad outcome and impact of the Aspirational District Fellowship Program are summarized below:

- ADFs effectively planned and facilitated the utilization of INR 3000 crore for more than 11,000 projects, supporting infrastructure and service improvement in the districts.
- Assistance provided in preparing State and District Health Action Plans, enhancing planning and implementation of National Health Mission initiatives.
- Assistance provided in assessment of education status in districts and implementation of projects to improve infrastructure, quality enhancement measures, and school management, leading to positive educational outcomes.
- Support offered in developing water resources, providing irrigation support, demonstrating farming techniques, and facilitating market linkages for better agricultural productivity and price realization.
- Identification of infrastructure needs, such as roads, housing, and drinking water supply, with a focus on creating common service centers and improving internet connectivity.
- Mobilization of youth for skill training programs and establishment of skill training centers. Support extended for financial inclusion activities like Jandhan and Aadhaar enrollment.
- Orientation of line departments on data indicators and reporting, monthly data analysis to highlight areas needing attention, and implementation of block-level dashboards for improved performance.

Project 25: Sujalam Sufalam

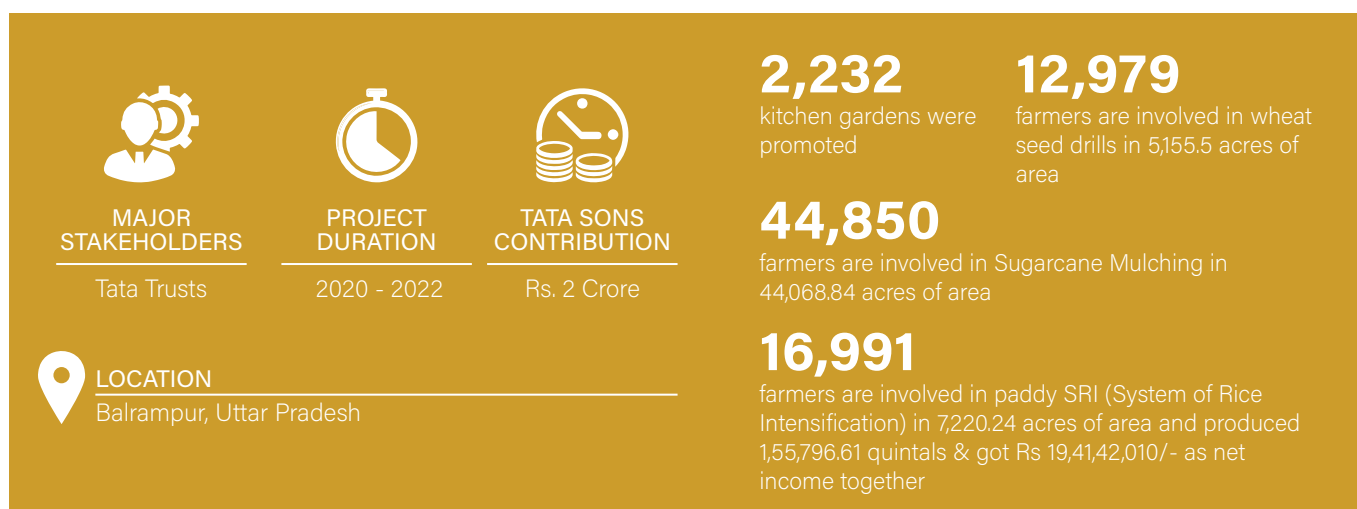


BACKGROUND:

With the backing of Tata Sons, the Tata Education & Development Trust implemented the Sujalam Sufalam Initiative in eastern Uttar Pradesh. The primary objective of this initiative was to enhance the livelihood conditions of 13,500 small and marginal farmers while ensuring food security. This was achieved through the introduction of improved agricultural practices and the promotion of rural entrepreneurship. The intervention focused on digitalizing agrotechnology extension to offer diverse livelihood options. Additionally, the initiative addressed the critical issue of water conservation in agriculture, aiming to create sustainable and prosperous farming communities.

The key components of the program are as follows:

- Fostering signature crops as change agents for prosperity.
- Renovation of existing surface water structures like natural or man-made ponds in each gram panchayat through building a three-way partnership –local village level participation, gram panchayat, and local administration support and by leveraging available financial support from various schemes, including MGNREGA.
- Creating a high level of awareness for efficient water use amongst the farmer community using multidimensional approaches and through various interventions.
- Preparation and promotion of a nutrition garden not only to increase income but to contribute to nutritional inputs for families.



OUTCOME & IMPACT:

The broad outcome and impact of Sujalam Sufalam program are summarized below:

- Increase income and promote sustainable practices in agriculture and water management resulting in improved livelihoods and sustainable water management for small and marginal farmers.
- Increased awareness and knowledge of modern sustainable farming practices, increased crop productivity.
- Increase income atleast Rs.50,000/- per annum.
- Ensure the food security among them through introducing improved agriculture practices, promoting rural entrepreneurs.

Project 26: Transformation Initiative through Centre for Microfinance







BACKGROUND:

With the aim of enhancing rural livelihoods and improving the quality of life in Rajasthan, India, Tata Trusts partnered with the Centre for Microfinance and Rajasthan Grameen Ajeevika Vikas Parishad (RGAVP) to implement sustainable livelihood interventions. This initiative was carried out in 36 blocks across nine districts of Rajasthan. It placed special emphasis on empowering women through the promotion of women-led livelihood options, particularly through the establishment of Self-Help Groups (SHGs). Furthermore, the intervention aimed to strengthen the institutions supporting these groups, enabling them to effectively contribute to the socio-economic development of the region.

The key components of the program are as follows:

- Promoting and enhancing capacities of small and marginal farmers by facilitating dissemination and adoption of crop-specific practices.
- Creation of community resource pools by providing training to master community trainers to ensure Standard Operating Procedures (SoPs) training to Village Organisations (VO) and SHG level.
- Building and strengthening robust community institutions including SHGs for promoting livelihood and increasing farmers' cash income.
- Ensuring food security through productive, diversified crop culture and livestock management.

 MAJOR STAKEHOLDERS Tata Trusts Centre for Microfinance Rajasthan Grameen Ajeevika Vikas Parishad (RGAVP)	 PROJECT DURATION 2020 - 2022	 TATA SONS CONTRIBUTION Rs. 2.6 Crore	<p>2.9 times increase in average household income per annum over the project period</p> <p>3 times increase in average household income per annum over the project period from agriculture</p> <p>16,500 number of farmers given training on the productivity of crops Vermicompost & Nadep Preparation</p> <p>480 SHGs whose members were mobilized for asset creation</p>
 LOCATION 36 blocks of 9 districts of Rajasthan			

OUTCOME & IMPACT:

The broad outcome and impact of the Transformation initiative program are summarized below:

- Increase in average household income per annum over the project period
- Three times increase in average household income per annum over the project period from agriculture
- 1.7 times Increase in average household income per annum over the project period from livestock
- Enhanced economic conditions of the farmers through multiple livelihood options such as farming and livestock resulting in improved community health.
- Enhanced gender equality in the community which led to better decision-making among women farmers
- Increased nutritional intake in the community has resulted in a healthier and more productive community

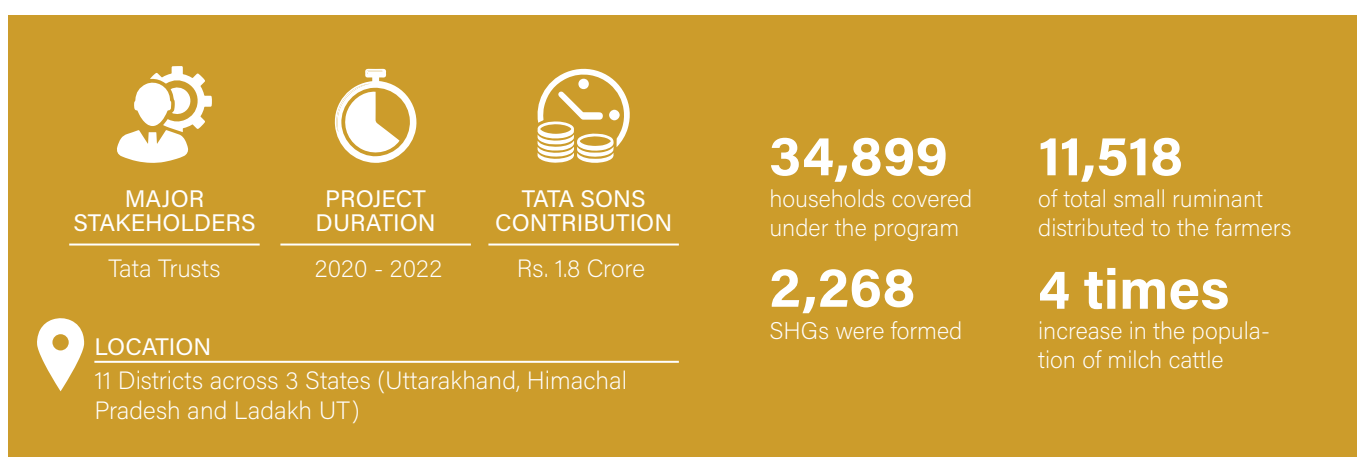
Project 27: Central Himalayan Livestock Initiative (CHLI)



BACKGROUND:

The central and western Himalayan regions face significant challenges due to economic underdevelopment, limited market access, and low farm production resulting from traditional farming practices. These challenges are particularly amplified for the communities whose livelihoods depend on livestock rearing. In response, Tata Trusts collaborated with the Himmotthan Society (HMS) to establish a comprehensive program aimed at enhancing the farm-based value chain and livestock sector in the region.

The primary objective of the program was to uplift the quality of life for more than 35,000 households. This was achieved through the development of self-sustaining institutions and the implementation of resilient livelihood interventions. The ultimate goal was to empower these households to achieve economic stability and self-reliance, thereby overcoming the barriers of underdevelopment and limited market access. By fostering sustainable practices and supporting the growth of the livestock sector, the program strived to create lasting positive impacts on the lives of the communities in the central and western Himalayan regions.



OUTCOME & IMPACT:

The broad outcome and impact of the Central Himalayan Livestock Initiative program are summarized below:

- Increase in per-year sales of households generating profit through feed units.
- Improved gender equality as the Program helped in reducing women's workload. This reduction in drudgery allowed women to participate in other income-generating activities, empowering them and their families.
- Increased livestock productivity and milk yield lead to an increase in income for the farmers, improving their livelihood security.
- Improved quality of livestock breed which increased milk productivity and reduced the incidence of livestock diseases.
- Increased collective marketing of milk and milk products enabling farmers to earn a better price for their products and creating more stable and sustainable income streams.
- Strengthen community-based enterprises through formation of Farmers Producer Organizations (FPO).
- Increase milk sales income to Rs.37/ litre from Rs.28/ litre.
- Increase in average milk production to 7.5 litres per household.

Rural Upliftment : OECD Analysis

RELEVANCE

RATING - 5

The interventions under Rural Upliftment are highly relevant as they address pressing needs, enhance sustainable livelihoods, promote inclusive development, and alleviate poverty in rural communities.

- **Speak to Critical Challenges:** Address pressing needs of agriculture, livelihood, and economic conditions of rural communities, crucial for poverty reduction.
- **Promote Sustainable Livelihoods:** Focus on sustainable livelihood initiatives, involving women-led community institutions like SHGs, to alleviate unemployment and enhance economic conditions.
- **Promote Inclusive Development:** Aim to enhance the human development in underdeveloped districts, ensuring inclusive and sustainable progress.
- **Foster Economic Empowerment:** Increase the income of small and marginal farmers, while promoting water conservation and providing crop insurance and agricultural credit options.
- **Building Resilient Livelihoods:** Promote sustainable livelihoods, addresses livelihood security, and fosters community-based participation for resilient economic growth.

COHERENCE

RATING - 5

The interventions show a robust coherence as they align with the following Sustainable Development Goals



The interventions also align with the following National Programs and goals:

- National Rural Livelihood Mission(NRLM),
- Mahatma Gandhi National Rural Employment Guarantee Act (MGNREGA)

EFFECTIVENESS

RATING - 5

The interventions under Rural upliftment have shown high effectiveness in achieving their primary goals successfully.

Enhancing Income and Sustainable Practices:

- The program successfully increased the average annual income of small and marginal farmers through the adoption of sustainable agricultural practices and efficient water management techniques.
- Farmers experienced improved livelihoods and enhanced financial stability, leading to increased economic resilience.
- The program's focus on community participation and capacity building contributed to the successful implementation of sustainable agricultural practices and effective water resource management.

Increased Livelihood Security & Sustainability:

- The interventions effectively achieved their primary objectives of increasing the average annual income of farmers and promoting sustainable agricultural practices and water management.
- Farmers benefited from enhanced income-generating opportunities, diversified livelihood options, and improved market access.
- Sustainable agricultural practices, including organic farming and efficient irrigation techniques, strengthening the livestock and farm-based value chain led to long-term environmental sustainability and resilience.

Transformative Changes and Improved Quality of Life:

- The program achieved transformative changes across various socio-economic aspects, including improvements in health, nutrition, access to education, and water management.
- Beneficiaries witnessed tangible improvements in their quality of life, such as better healthcare services, increased school enrollment, improved water availability, and enhanced community participation.
- The holistic approach addressed key developmental challenges and brought about positive and sustainable changes in the lives of the beneficiaries.

EFFICIENCY

RATING - 4.5

The interventions have achieved a high degree of efficiency owing to their decentralized approach and strong collaborations with key stakeholders.

Decentralized Approach: The interventions' decentralized approach, organizing women-led community organizations, and involving farmer groups have enhanced efficiency by promoting community participation, ownership, and effective resource allocation.

Stakeholder Collaboration: Collaborations with key stakeholders, including government agencies, Ministries, non-profit organizations (NPOs), and MNREGA, have further strengthened efficiency through resource leveraging, knowledge sharing, and building strong partnerships and networks among various actors.

IMPACT

RATING - 4.5

The interventions have had immediate and lasting impacts on the communities they benefitted.

Economic Empowerment and Livelihood Enhancement:

- The focus on sustainable livelihood initiatives and the adoption of improved agricultural practices has led to increased income for farmers, providing multiple sources of revenue.
- Equipping farmers with modern farming techniques and knowledge and adoption of high-value crops has improved their ability to sustainably manage farms and increase their income in the long term.
- Women's involvement in livestock management and business management has empowered them economically and contributed to the overall economic growth of the area.

Social Well-being and Community Development:

- The program's participatory approach and community involvement in water and livestock management have resulted in social well-being and improved livelihoods for the target communities.
- The establishment of self-reliant cooperatives and the involvement of women in business management have promoted gender equality, empowered communities, and fostered community development.

Partnerships and Collaboration:

- Collaborations with government flagship programs and key stakeholders have strengthened networks, leveraged resources, and enhanced the outreach and outcomes of the interventions.

SUSTAINABILITY

RATING - 4.5

Owing to their thoughtful design, partnership-driven approach, and establishment of sustainable practices make the interventions under Rural Upliftment are poised for continued success and lasting impact on the community.

Sustainable Livelihood Initiatives:

- The interventions promote a range of livelihood initiatives, including livestock management and the cultivation of high-value and nutritional crops, leading to more sustainable agricultural practices and improved community health.
- The efficient use of water resources is emphasized, ensuring the long-term sustainability of water management practices.

Economic Sustainability:

- The increase in annual income for small and marginal farmers contributes to the economic sustainability of the program, ensuring the continued well-being of the farming community.

Institutional Strengthening and Systems:

- The interventions establish and strengthen institutions, systems, and processes, such as Self-Help Groups (SHGs) and community institutions for revolving fund management, to ensure long-term sustainability.
- Collaboration with government institutions, such as MNREGA, ULDB, and the Department of Animal Husbandry, facilitates continued support and funding for sustainable practices beyond the duration of the interventions.
- Training of para-vets reduces dependency on external veterinary services, promoting self-sufficiency and long-term sustainability.

Gender Inclusivity and Social Sustainability:

- The involvement of women farmers in the program promotes gender inclusivity and contributes to women's empowerment, enhancing social sustainability.

Urban Poverty Alleviation

Project 28: Dasra Adolescent Collaborative



BACKGROUND:

The 10 to 19 Dasra Adolescents Collaborative is a platform that aims to empower adolescents and achieve critical outcomes for their well-being. The key outcomes prioritized were the completion of secondary education, delayed age of marriage, delayed age of first childbirth/pregnancy, and increased agency.

With the support of Tata Trusts grant, the Collaborative's focus was on gathering evidence, monitoring progress towards the four outcomes, engaging with the government, leading a national movement for adolescent health and well-being, sharing best practices, and channeling philanthropic capital to meet emerging priorities and needs for adolescents. The Collaborative used methods of recommendation and evidence, which were based on program learnings and data. Some examples of emerging priorities were gender-based violence, rebuilding from the effects of COVID-19, and providing education for employability.

			Partnered with 3 organizations and launched a campaign for adolescents, partnered with NITI Aayog to create linkages between youth and the health system
MAJOR STAKEHOLDERS	PROJECT DURATION	TATA SONS CONTRIBUTION	4,50,887
Tata Trusts Dasra (Impact Foundation - India)	2019 - 2022	Rs. 1.19 Crore	adolescents reached through physical contacts
	LOCATION		5M+
Jharkhand and other states			digital outreach was achieved for public mobilization

OUTCOME & IMPACT:

The broad outcome and impact of the Dasra Adolescent Collaborative program are summarized below:

- 41% of the surveyed adolescent girls said they should participate in discussions with parents about marriage.
- About 50% reduction in reported cases of gender based violence against adolescent girls at home.
- The program's impact extends beyond immediate improvements in adolescent health and development. Its strategies, such as dedicated budgeting and policy provisions, create lasting changes in institutional commitments to this critical area. As a result, the program has a long-lasting impact on the overall health and well-being of adolescents, women, and their communities.
- It's high-impact platform that unites funders, technical experts, governments and social organisation to achieve the purpose.
- 15,000 young people were reached through the "Ab Meri Baari" campaign.

Project 29: Promote Grassroots Entrepreneurships

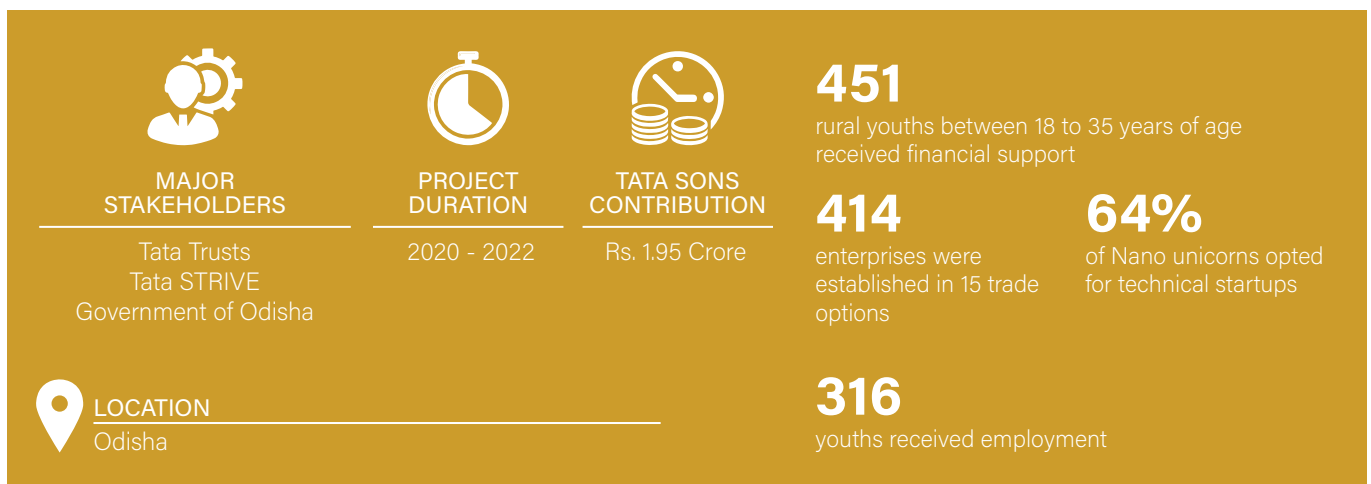


BACKGROUND:

The program was designed to promote grassroots entrepreneurship and address unemployment challenges in Odisha, India. By identifying and supporting aspiring entrepreneurs, the program provided them with essential training, financial support, and access to necessary resources. This empowered them to establish and manage their own businesses, while simultaneously generating employment opportunities for others.

With a successful track record of assisting over 160 Nano-Unicorns, the Odisha Skill Development Authority (OSDA) aimed to nurture the growth of 1000 Nano-Unicorns in the first year and an additional 3000 in the second year. Tata Strive, in partnership with OSDA, played a crucial role in developing and implementing the program. It provided soft loans of up to INR 1 lakh to aspiring entrepreneurs who had completed skill training programs from (Tata Community Initiatives Trust) government recognized training institutes. This financial support acted as a catalyst to jump-start their ventures and create potential job opportunities.

The term "Nano-Unicorns" aptly described these budding entrepreneurs, as they possessed unique qualities and entrepreneurial potential akin to the mythical creature, the unicorn. This symbolism represented their strength, innovation, and potential for success. By nurturing the talents and aspirations of these individuals, the Nano-Unicorn program aimed to foster entrepreneurship at the grassroots level, alleviate unemployment challenges, and contribute to the overall economic development of Odisha.



OUTCOME & IMPACT:

Success stories of this program are given below:

- Sanjeeva Reddy (Batch- 09) has Plumbing Services in Berhampur, Ganjam district. He provides door-to-door plumbing services within Berhampur town. His monthly profit is around Rs.15,000 – Rs.20,000. He received funds in July'19 and now has successfully made the full 1 lakh repayment in 2.8 years. He has employed 4 people in his business.
-Sanjeeva Reddy
- Naresh Behera (Batch-22) has a sales & services of refurbished Laptop/Desktop business in Rourkela, Sundargarh district. He sells the products by highlighting them on various social media platforms. His monthly profit hovers around Rs 30000-Rs 35000/- and employed three support staff. He received funds in October '21 and now has successfully made the full 1 lakh repayment in 13 months. He has a newly set up training center name Gadget Reviver in Rourkela town to train young students on the repair of Mobile and Laptops/Desktops.
-Naresh Behra

Urban Poverty Alleviation : OECD Analysis

RELEVANCE

RATING - 5

The interventions within the Urban Poverty Alleviation hold great significance by effectively addressing the critical needs of adolescents and youth, fostering sustainable livelihoods, advancing inclusive development, and mitigating poverty within urban communities.

Dasra Adolescent Collaborative:

- The program's relevance lies in addressing the critical development issues faced by adolescents, leading to increased funding, sectorial alignment, and cooperative action for scalable impact.
- Initiatives such as Voices from the Ground, Ab Meri Baari Podcast & Mini-Series, Mobikaar program for Citizen Journalism, and Building Visibility ensure that adolescent voices are heard and their issues are addressed.
- The program focuses on outcomes such as secondary education completion, delayed age of marriage and first childbirth/pregnancy, and increased agency for adolescents.

Promote Grassroots Entrepreneurships in Odisha:

The Nano-Unicorn program is relevant as it provides localized business skills, easy finance, and support to unemployed skilled youth in Odisha, enabling them to become grassroots entrepreneurs.

- The program increases income and employment opportunities for rural youth, addressing the issue of poverty.
- Promoting enterprises through the program is essential for long-term economic development and reducing vulnerability.

COHERENCE

RATING - 5

The interventions show a robust coherence as they align with the following Sustainable Development Goals



The interventions also align with the following National Programs and goals:

- National Skills Development Mission
- Entrepreneurship Schemes

EFFECTIVENESS

RATING - 5

The interventions under Urban Poverty Alleviation have shown high effectiveness in achieving their primary goals successfully.

Dasra Adolescent Collaborative:

- The program has demonstrated remarkable efficacy in achieving its goals through a state-focused approach and collaboration with non-profit organizations.
- The program effectively addresses critical development issues related to adolescents, such as secondary education completion, delayed age of marriage and first childbirth/pregnancy, and increased agency.
- Various initiatives, including Voices from the Ground, Ab Meri Baari Podcast & Mini-Series, Mobikaar program for Citizen Journalism, and Building Visibility, ensure that adolescent voices are heard and their issues are addressed, contributing to the program's effectiveness.

Promote Grassroots Entrepreneurships in Odisha:

- The program has successfully achieved its defined objectives of building enterprises and connecting rural youths in Odisha with business opportunities.
- It has effectively increased the income and employment opportunities of rural youths, addressing the issue of poverty and promoting long-term economic development.
- The program's focus on localized business skills, easy finance, and hand-holding for unemployed skilled youths has contributed to its high effectiveness.

EFFICIENCY

RATING - 4.5

The interventions have achieved a high degree of efficiency owing to their strong engagement with key stakeholders, systematic communication, and partnerships with public departments.

Dasra Adolescent Collaborative:

- Efficient utilization of material and human capital through methodical communication and partner engagement at every level.
- Continuous buy-in and engagement from partners, fostering ongoing and long-term collaborations.

Promote Grassroots Entrepreneurships in Odisha:

- Implemented in collaboration with the Government of Odisha to promote livelihood options for skilled youth (Nano Unicorns) from recognized skill development institutes.
- Focus on diverse micro and nano enterprises, such as tailoring, electrical, repairing, fast food, plumbing, plastic manufacturing, welding, etc.
- Increased direct employment opportunities through micro and nano enterprises.
- Optimal utilization of resources, expertise, and support.
- Strong partnerships and networks were established among various actors, enhancing program efficiency.

IMPACT

RATING - 4.5

The interventions have had immediate and lasting impacts on the adolescents and youths they benefitted.

Dasra Adolescent Collaborative:

- Lasting impact on adolescent health and development beyond immediate improvements. Strategies like dedicated budgeting and policy provisions created institutional commitments for sustainable change.
- Long-lasting impact on the overall health and well-being of adolescents, women, and their communities.

Promote Grassroots Entrepreneurships in Odisha:

Immediate boost in livelihood opportunities and economic benefits for unemployed youth in Odisha.

- Standardized training relevant to the local context and easy finance support.
- Capacity building of young candidates and promotion of grassroots entrepreneurship.
- Long-lasting impact on the entrepreneurial ecosystem of Odisha.
- Potential for more job opportunities, increased economic activity, and overall socio-economic development of the state.

SUSTAINABILITY

RATING - 4.5

The interventions under Urban Poverty Alleviation are sustainable due to their long-term goals, collaborative approaches, emphasis on capacity building, and the establishment of partnerships that ensure enduring impact and promote continued success in the future.

Dasra Adolescent Collaborative:

- Long-term goals and collaborative approaches ensure program sustainability.
- Youth-led stigma and discrimination campaign adds value and strengthens partnerships with the government.
- Dasra serves as the primary collaborator, effectively representing the voices of youth and civil society.
- Ongoing consultations and discussions for expanding youth representation in decision-making forums.

Promote Grassroots Entrepreneurships in Odisha:

- A program designed with sustainability in mind, focusing on building youth's capacity for entrepreneurship.
- Support was provided for business plan development and initial funding.
- Emphasis on entrepreneurship for long-term economic development and vulnerability reduction.
- Knowledge management systems and advanced technology for knowledge capture and fund management.
- An increase in direct employment opportunities contributes to the program's economic sustainability.